

DOUBLE-SIZED ISSUE!

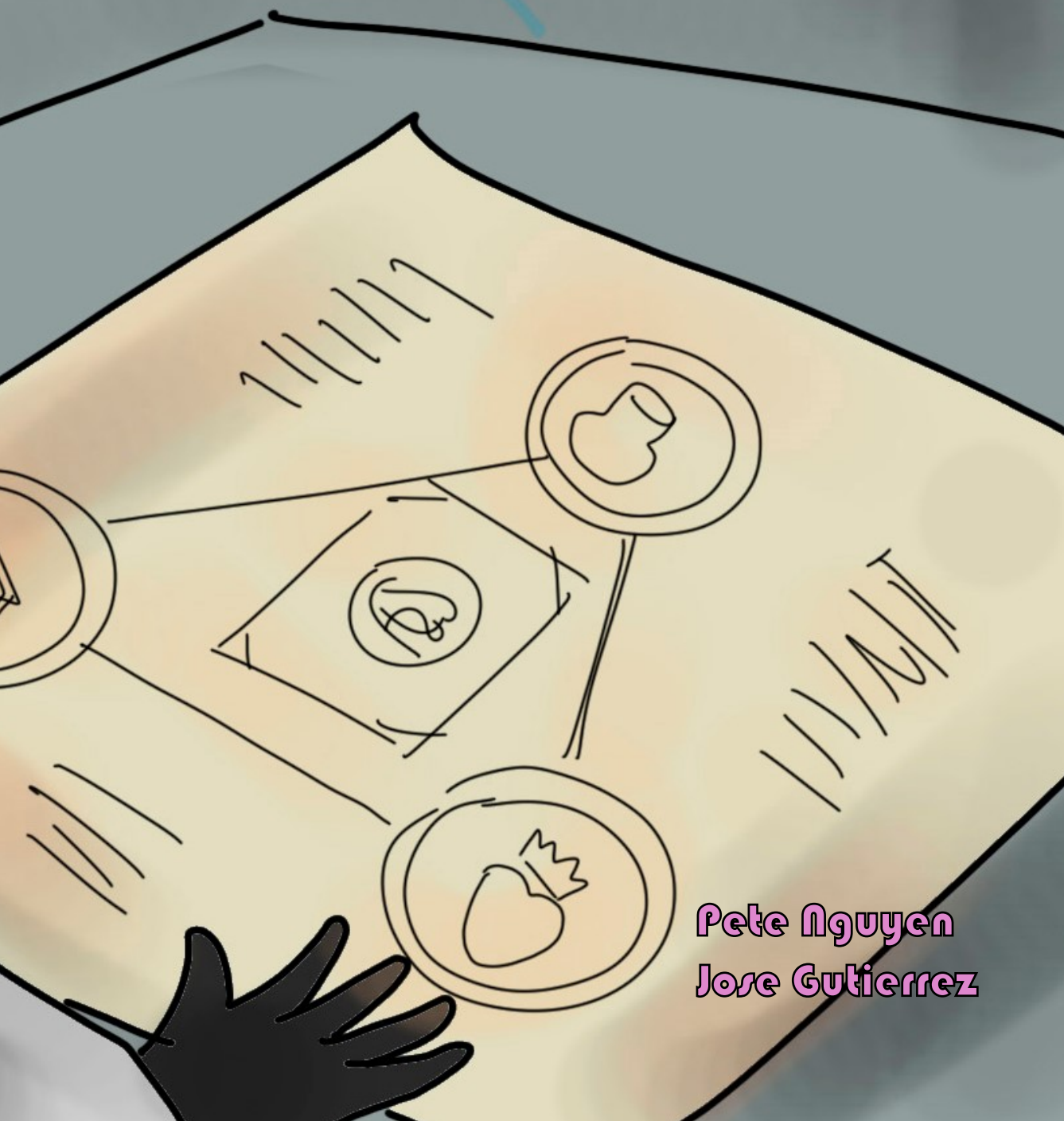


8

passageways

through the

METaverse



Pete Nguyen
Jose Gutierrez

passageways

through the

METaverse

created by
Paul Nguyen & Pete Nguyen

Pete Nguyen

Writer, Letterer

Jose Gutierrez

Art, Cover

Paul Nguyen

Editor

Passageways through the Metaverse is a comic about Aliza and her father's crazy, cynical friend, Barney, and their adventures in different metaverses using a golden book that has a troublesome sense of humor. Sometimes the metaverse they visit is an alternate universe, and sometimes it's just a strange place in the universe altogether.

Throughout their adventures, Barney wants to get out of the adventure as soon as possible because he's been there and done that for over 8000 years, but Aliza wants to connect with the people. Sometimes there's a lesson to be learned, but not if Barney can help it.

Issue 8

"Let's Go In"



PPN Creations

Pete Nguyen - President
Paul Nguyen - Chief Operating Officer
Charles Simon - Business Advisor
Rem Scherzinger - Business Consultant
Kevin Nguyen - Research, Website
Jason Schulte - PPN Creations Logo
Judy Nguyen - Marketing
Van Vo - Promotion Coordinator

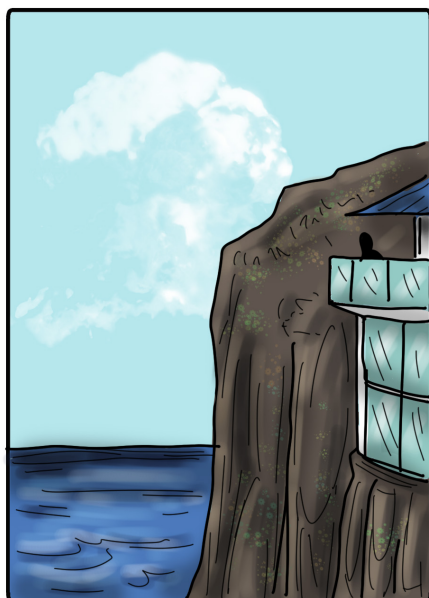
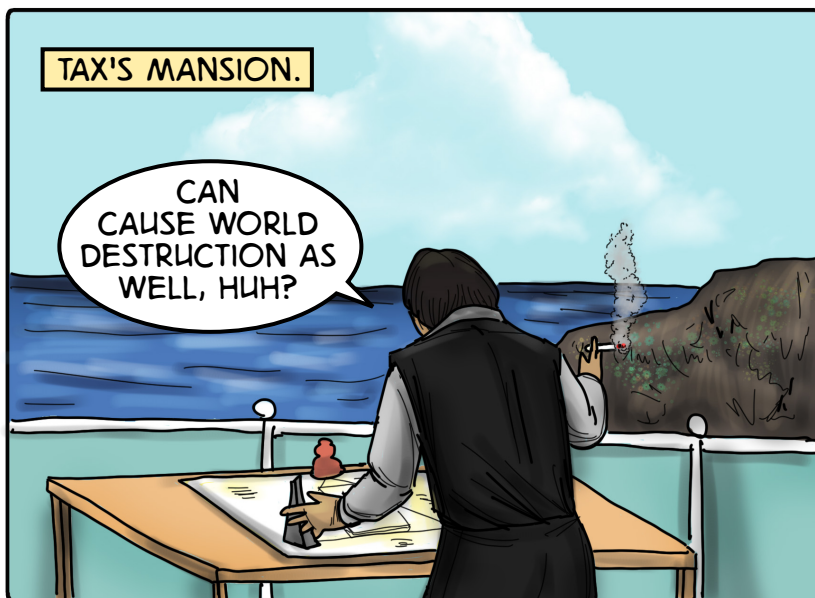


Passageways through the Metaverse. June 2020.

Copyright PPN Creations 2020. All rights reserved. All logos and likenesses of characters herein are trademarks of PPN Creations. No part of this publication may be reproduced or transmitted, in any form or by any means (except for short excerpts for journalistic or review purposes), without the express written permission of PPN Creations. All names, characters, events and locales in this publication are entirely fictional. Any resemblance to actual person (living or dead), events, or places, without satirical intent, is coincidental. PPNCreations.com

TAX'S MANSION.

CAN
CAUSE WORLD
DESTRUCTION AS
WELL, HUH?



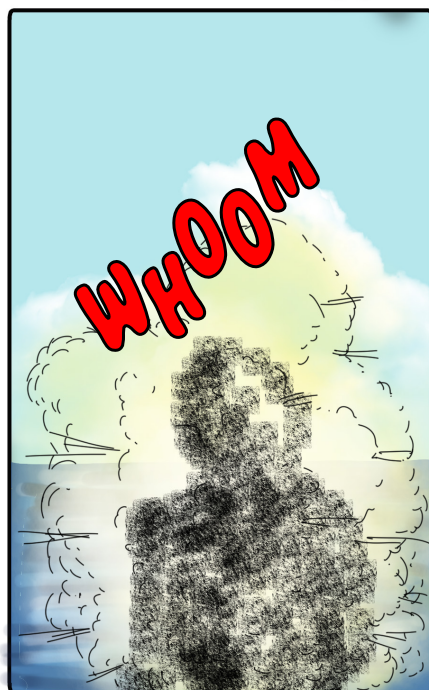
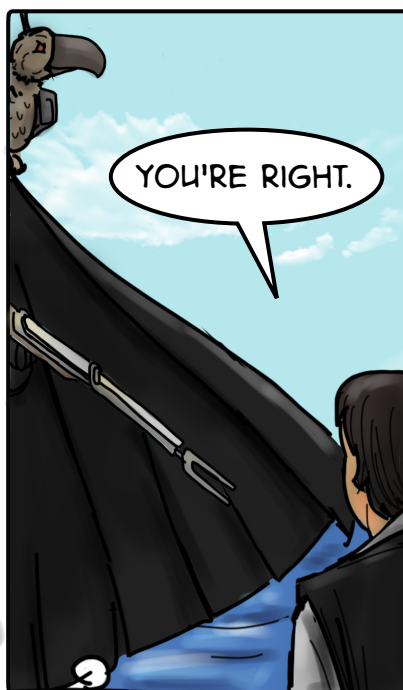
I
KNEW
YOU WOULD
EVENTUALLY
COME FOR
ME.

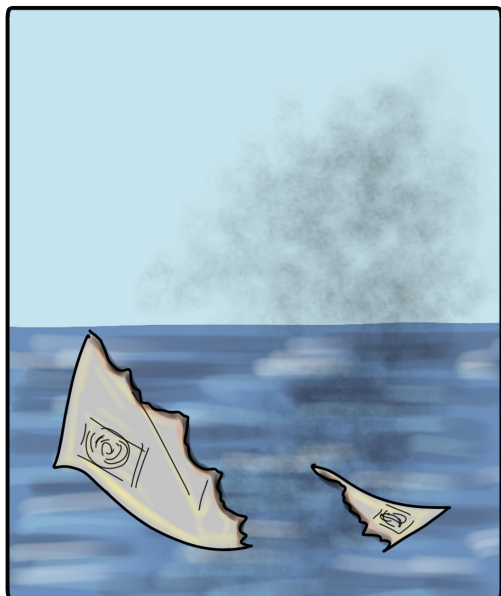


DELPHINE
IS NO LONGER
SAFE.

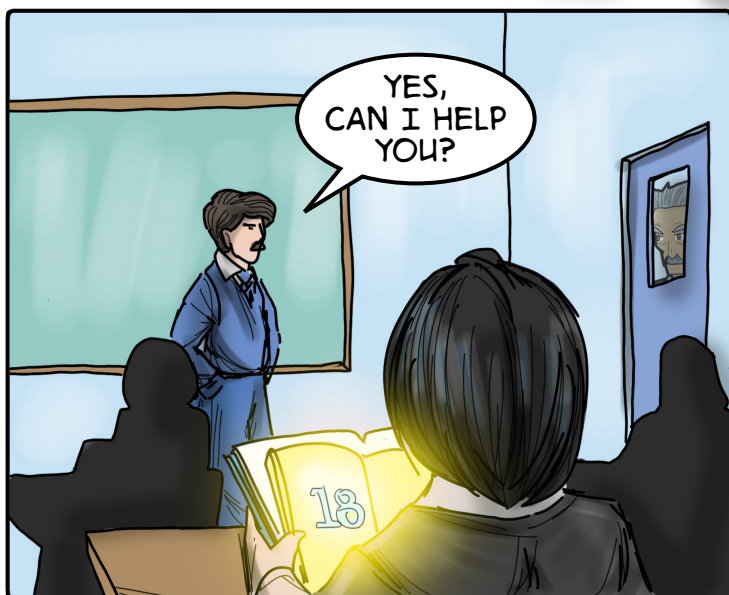
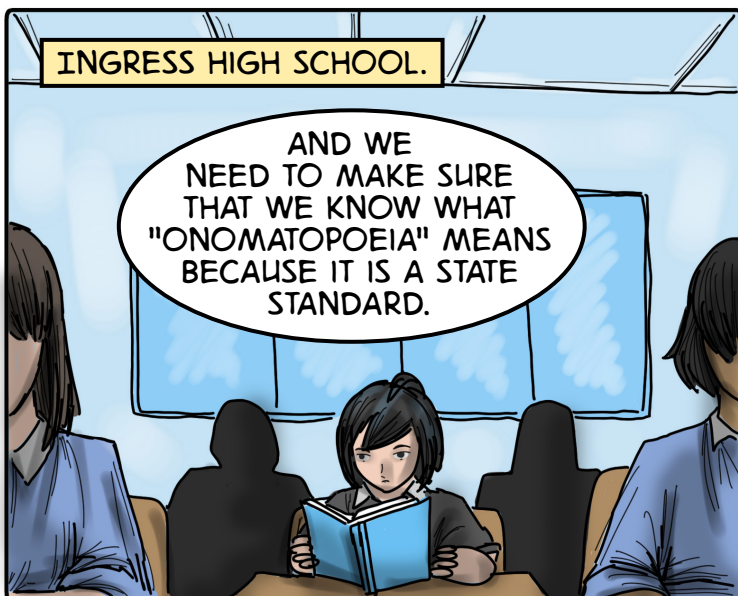


YOU'RE RIGHT.

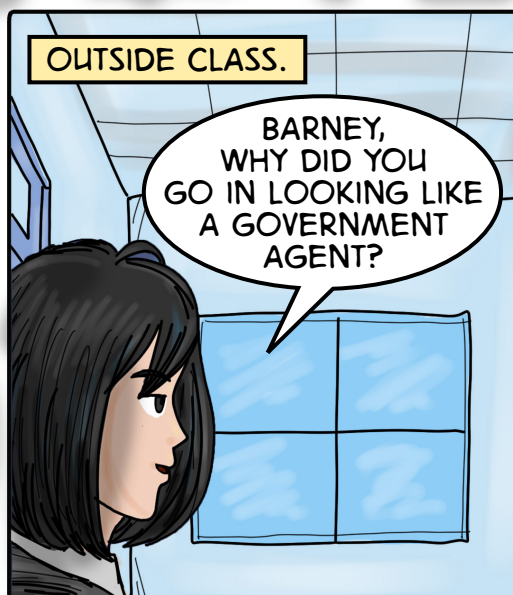


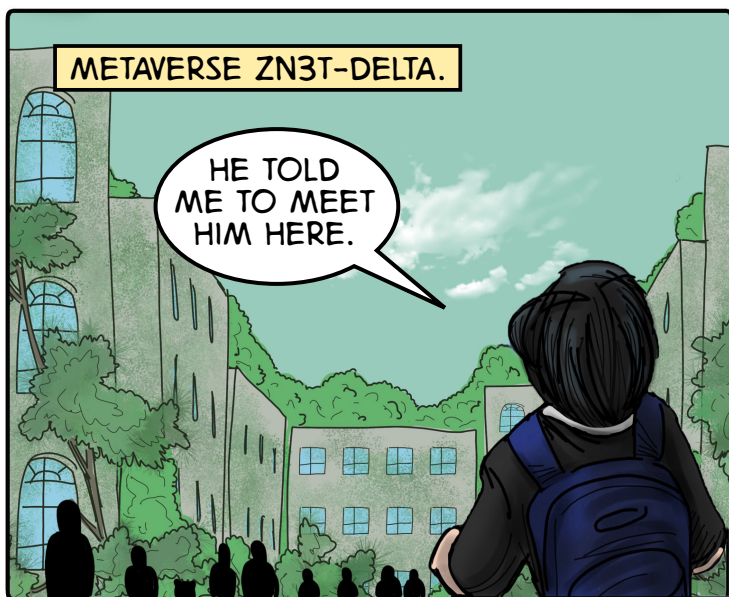
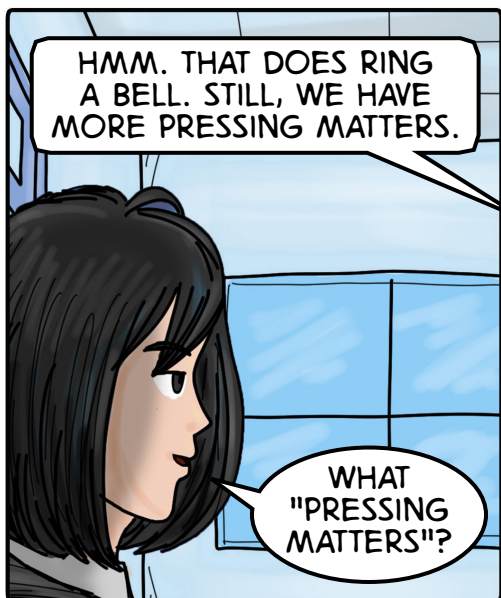


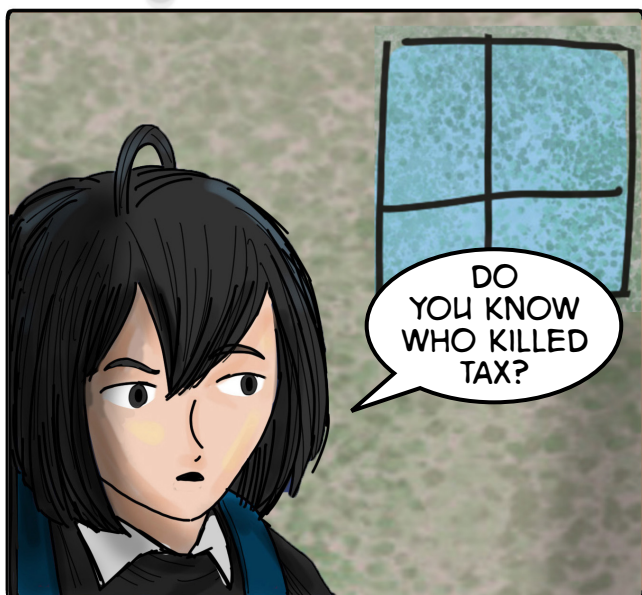
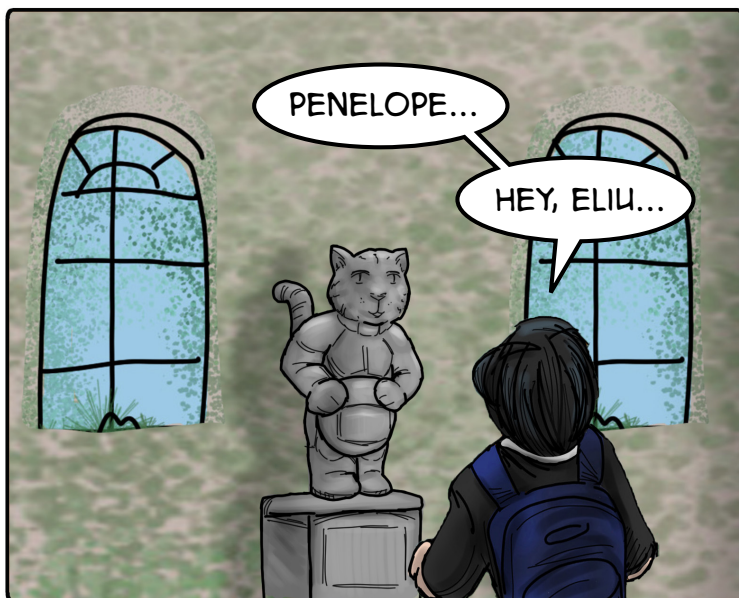
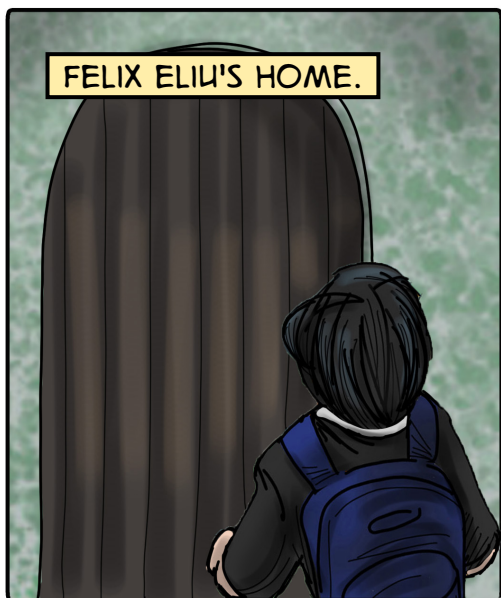
INGRESS HIGH SCHOOL.

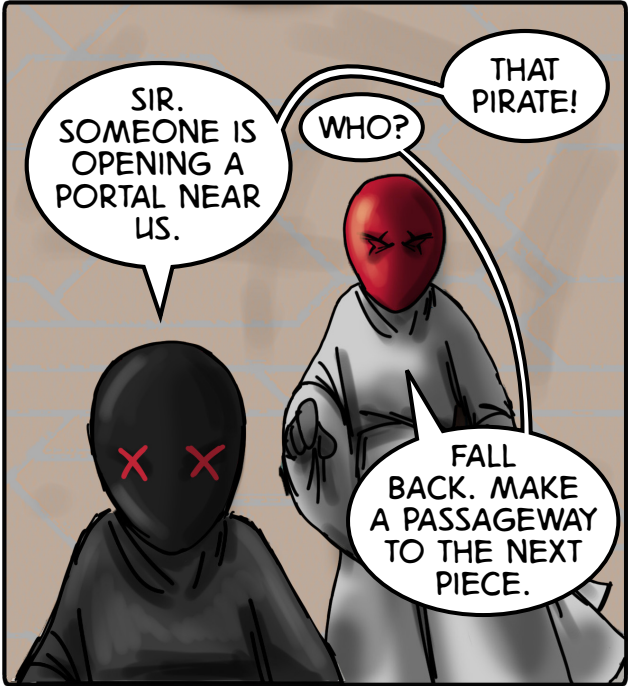
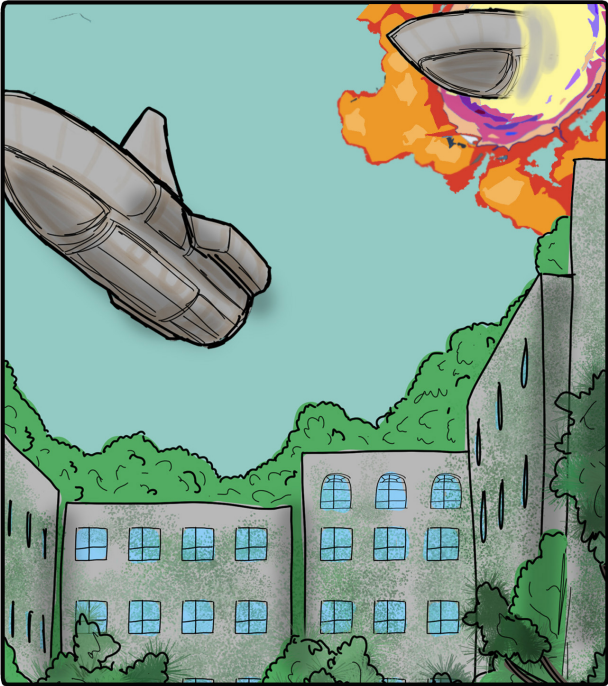
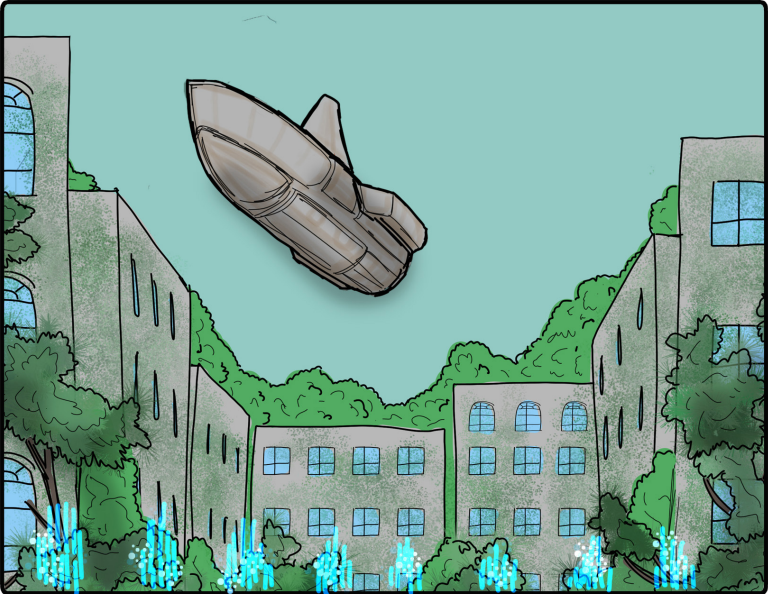


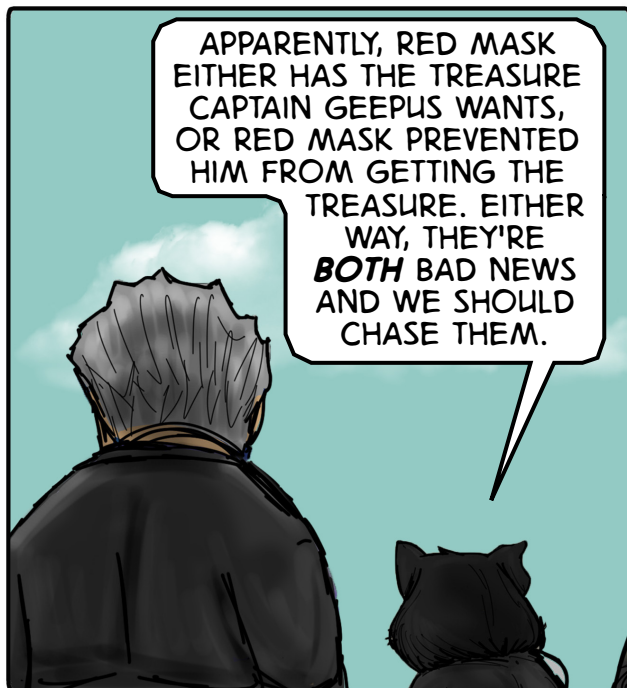
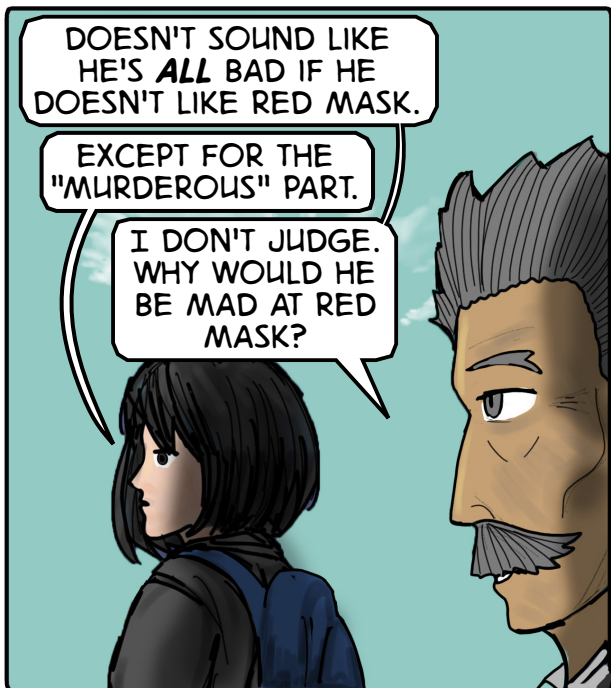
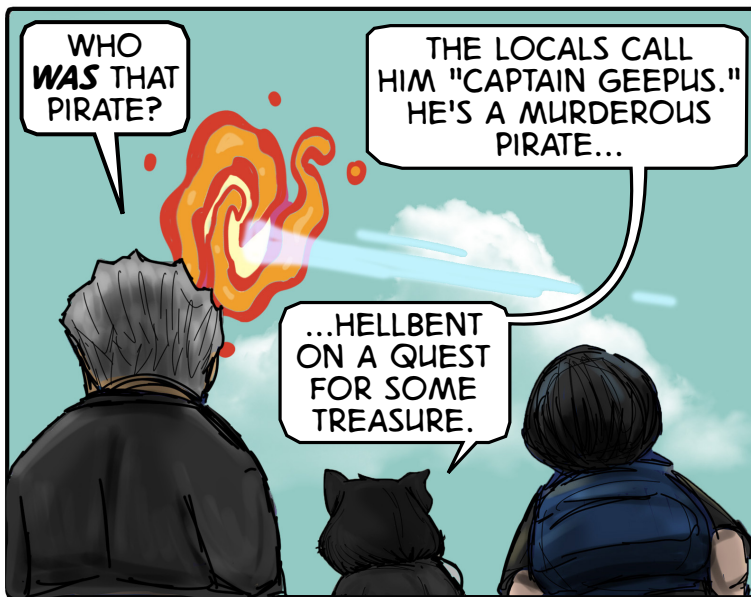
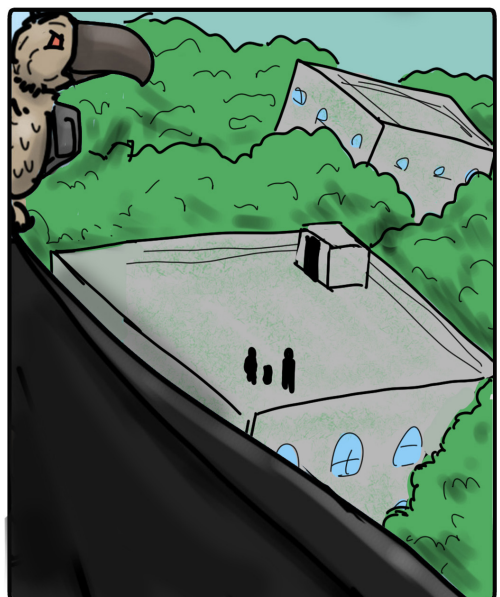
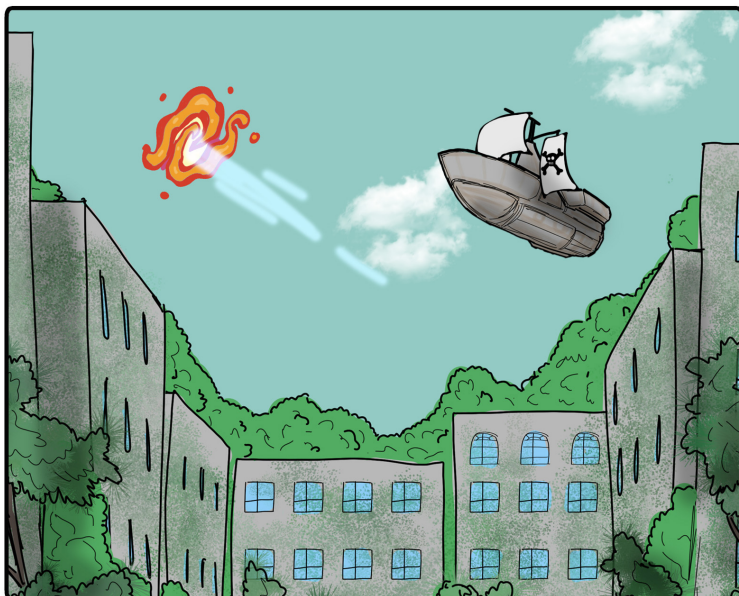
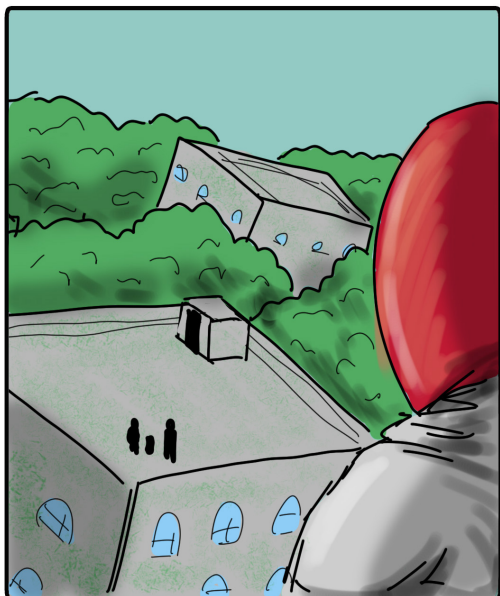
OUTSIDE CLASS.

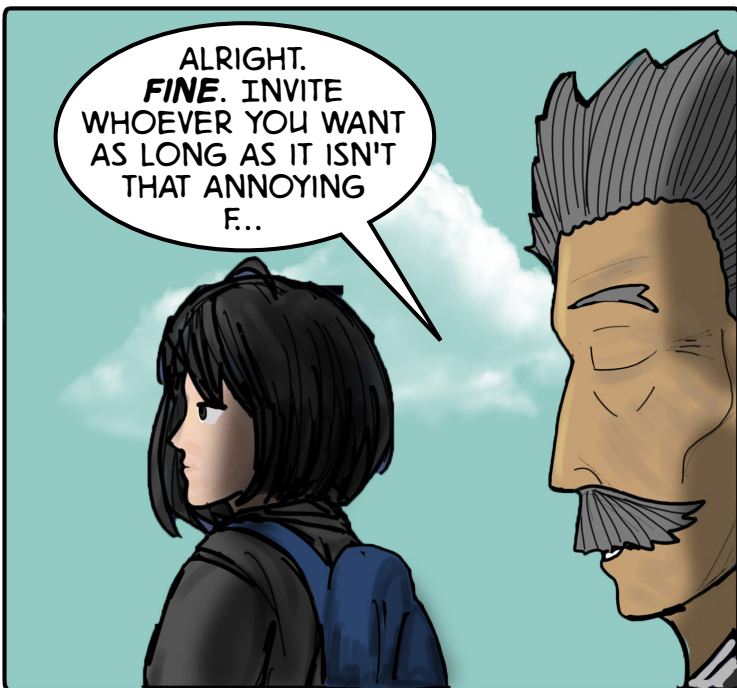
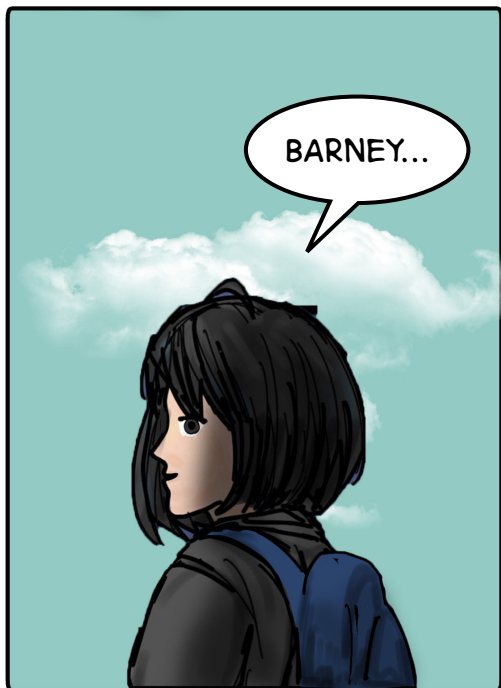
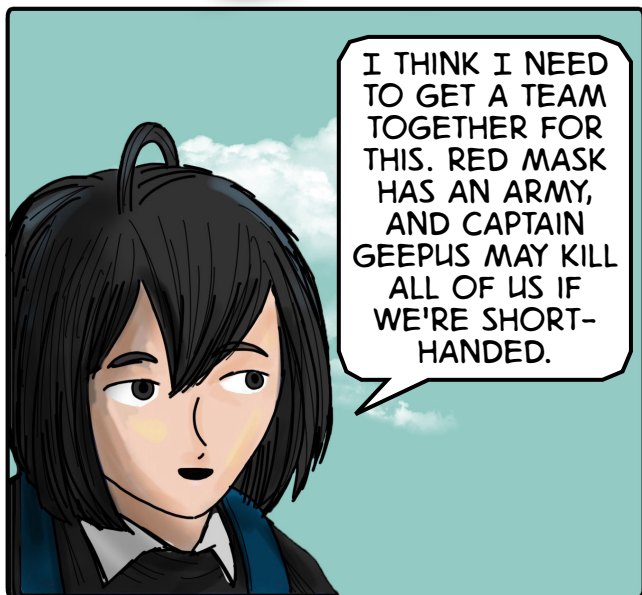




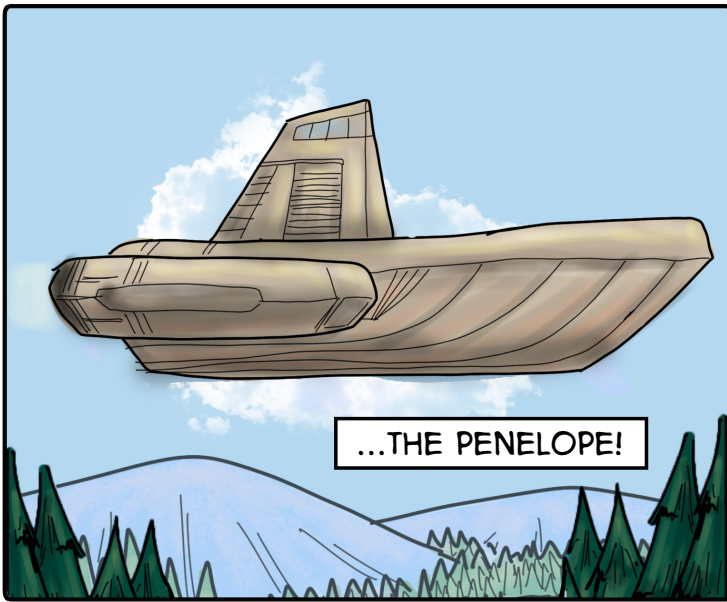












...THE PENELOPE!



WE
CAN PICK
UP BARBON
THE MIGHTY
TO HELP
US.



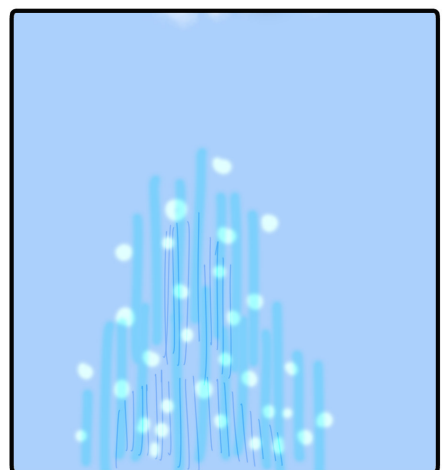
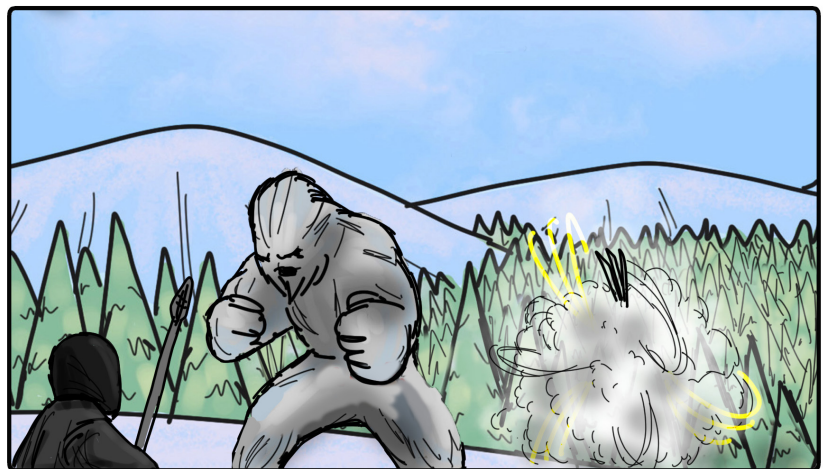
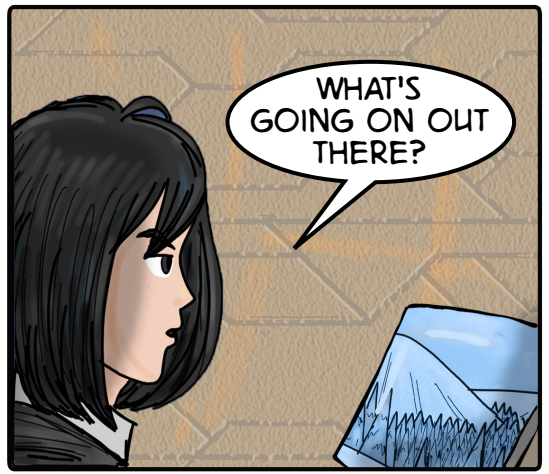
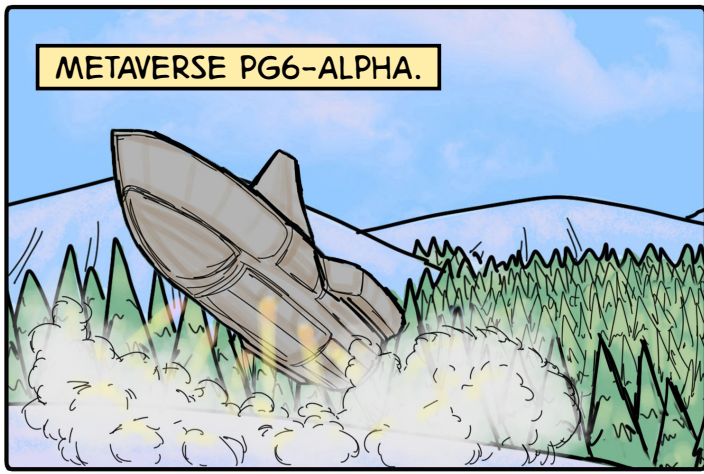
WHAT'S
THAT YOU HAVE,
ALIZA?

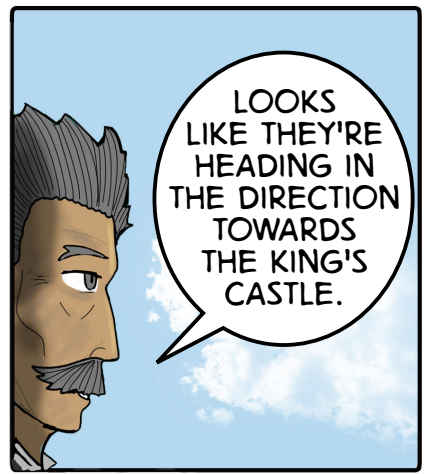


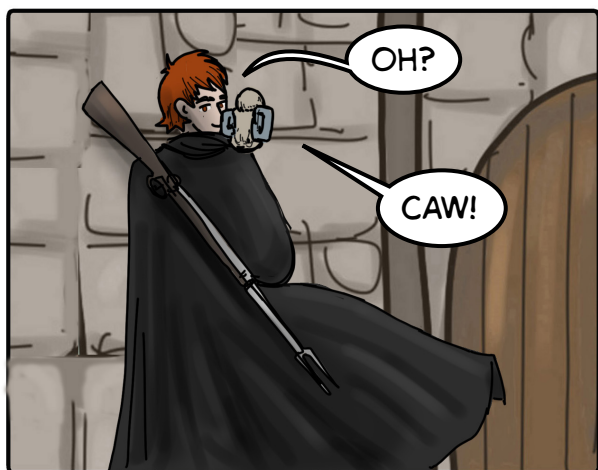
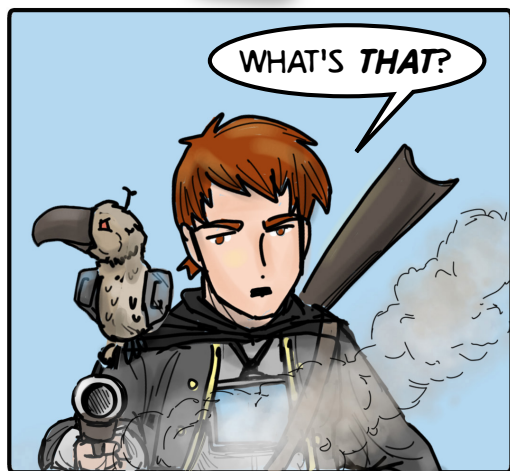
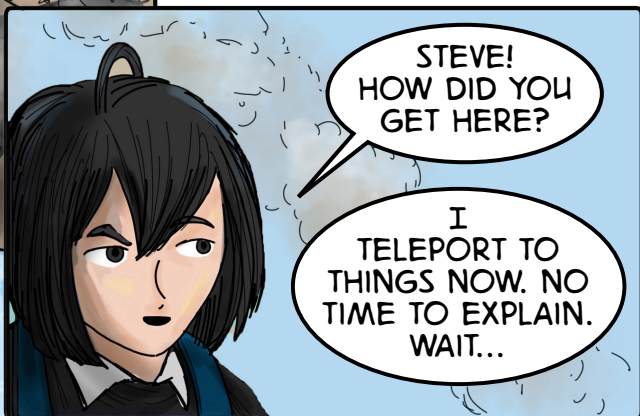
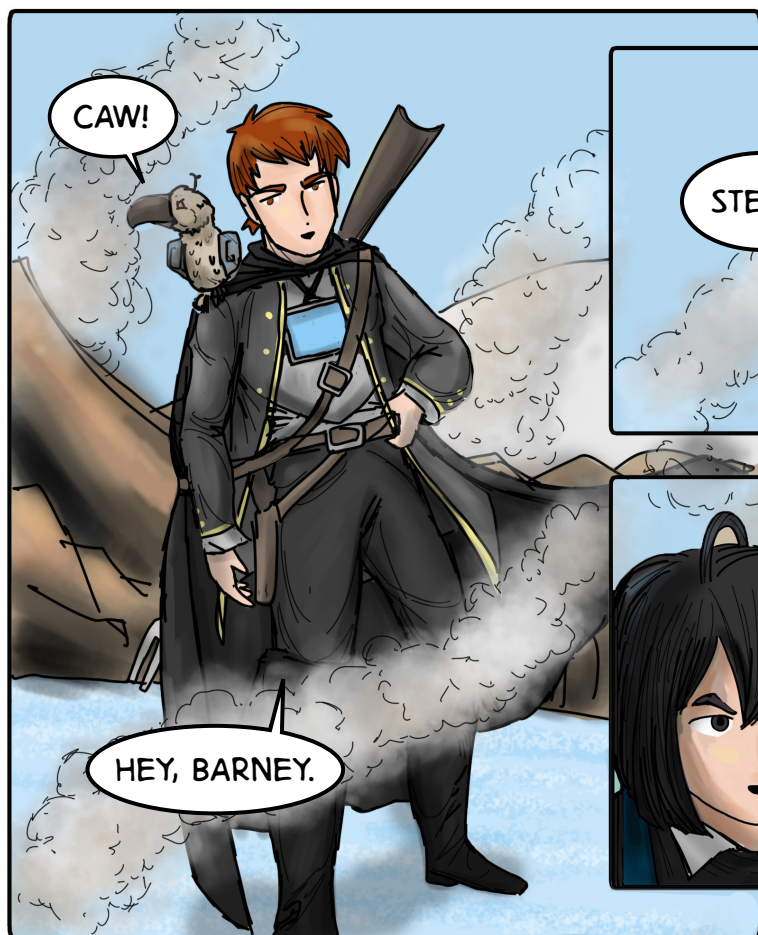
IT'S
A TEDDY BEAR
THAT BELONGED
TO MY SISTER
FROM ANOTHER
METAVERSE.

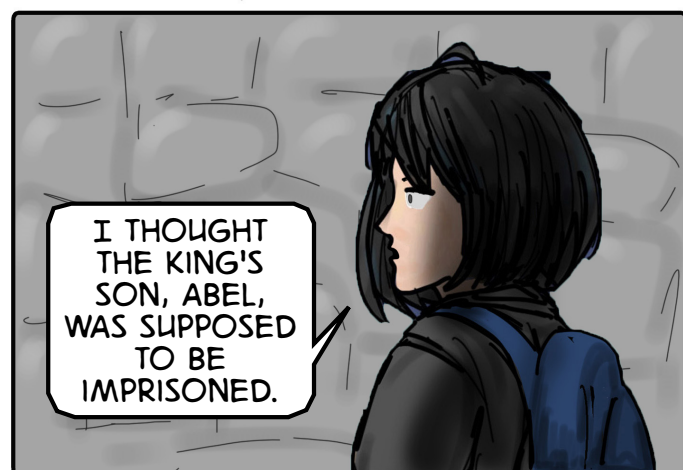
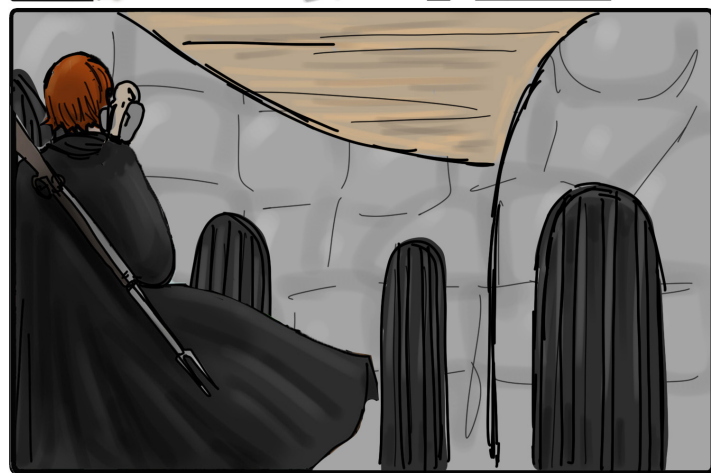
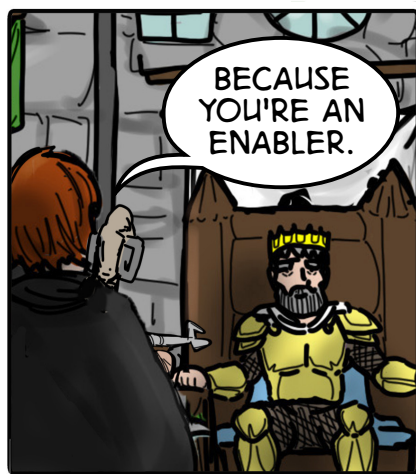


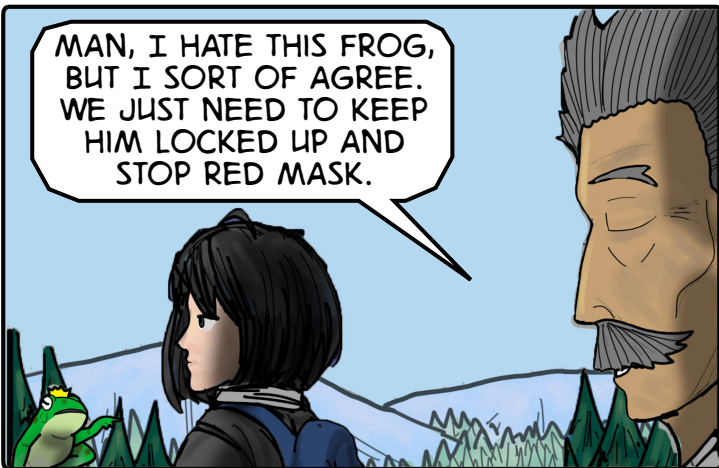
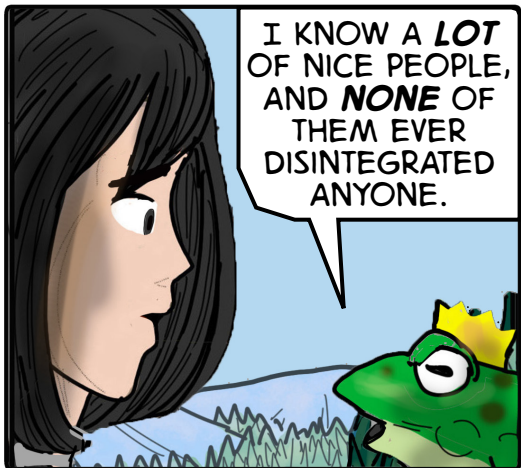
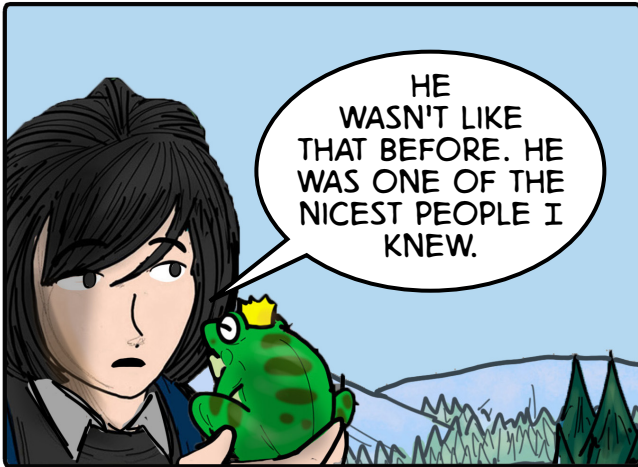
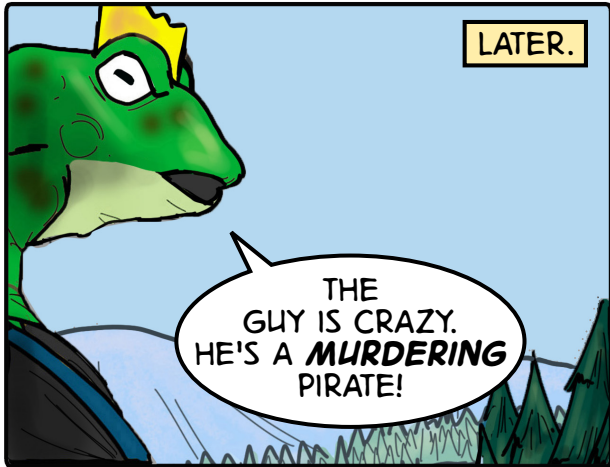
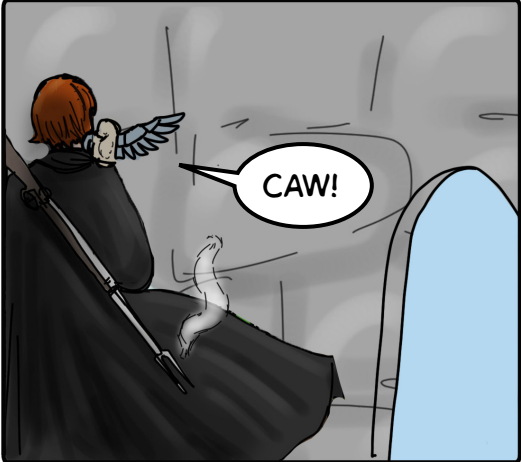
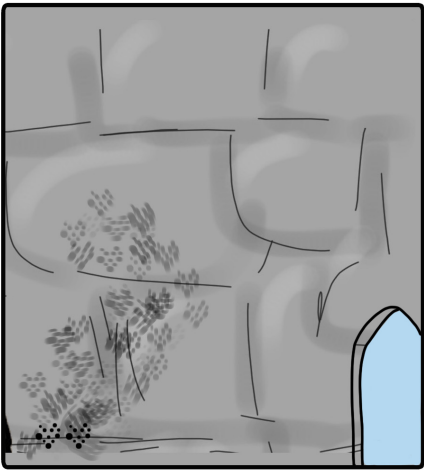
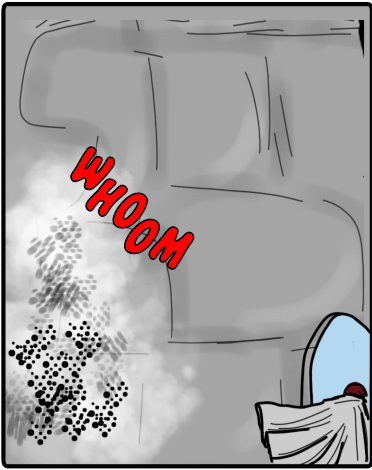
I
THINK IT'LL BRING US
LUCK.

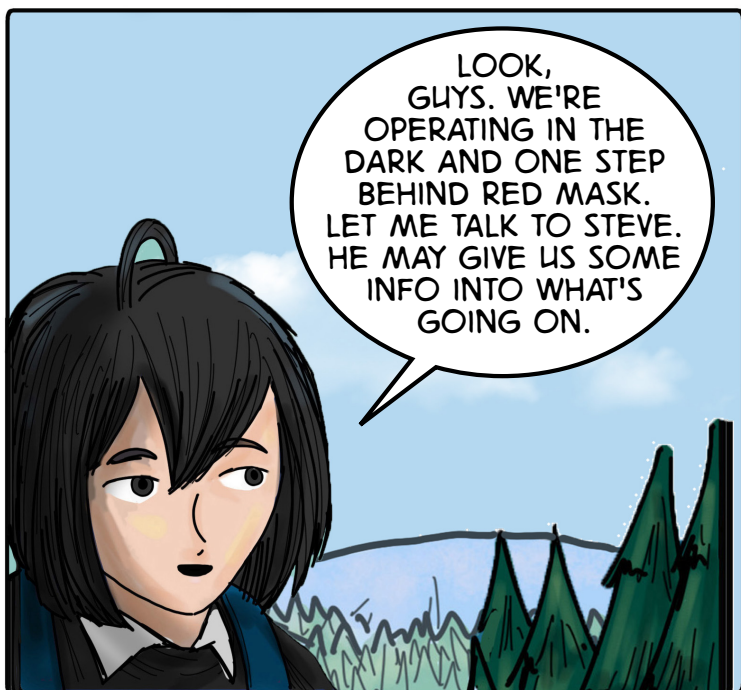
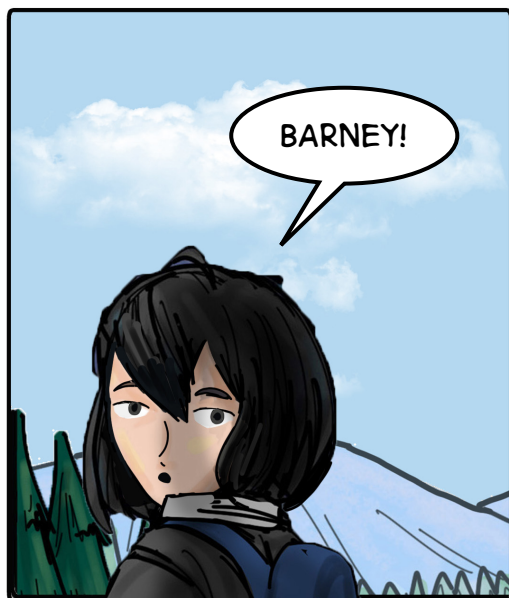
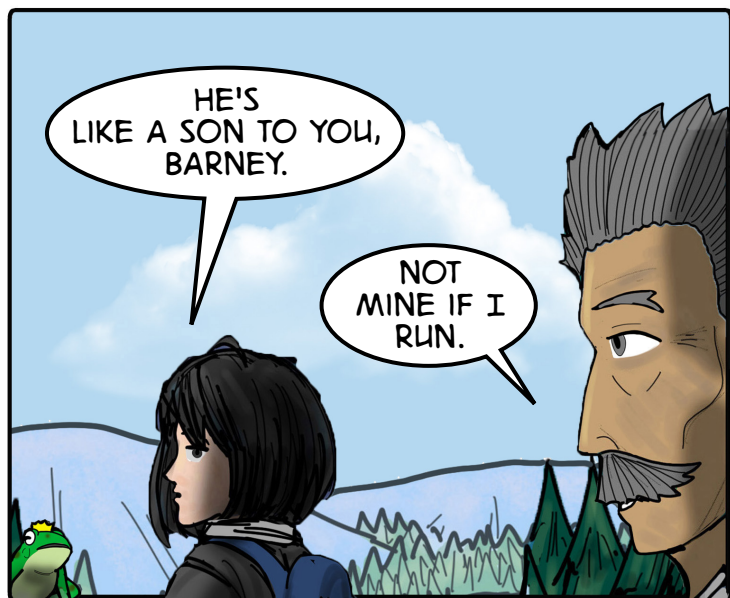


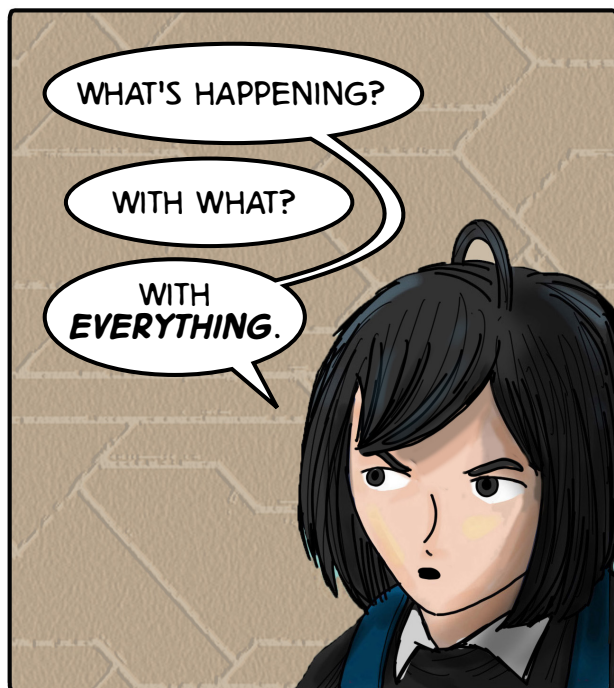










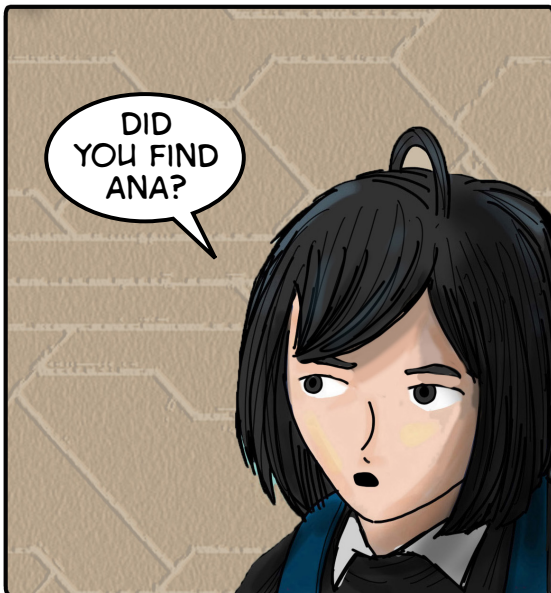




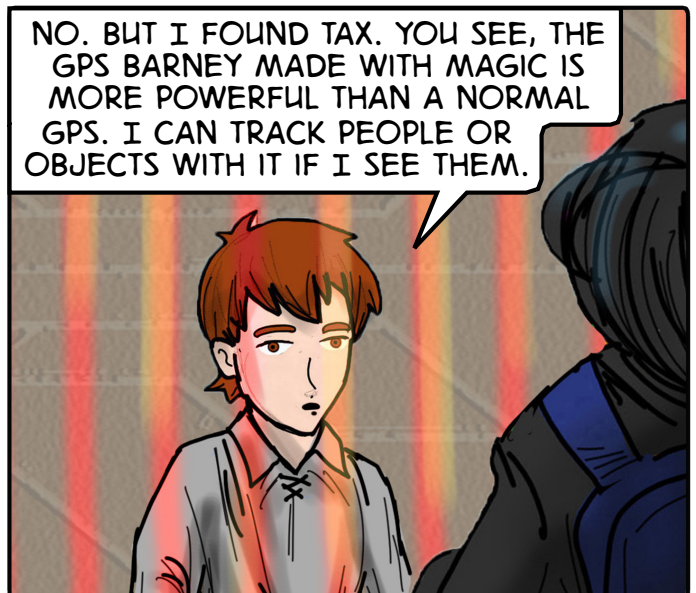
WHEN RED MASK
REALIZED HE
COULDN'T GET YOU,
HE WENT FOR
ANA INSTEAD...



...USING TAX'S CONNECTIONS AND
GOT TO OUR METAVERSE AND
TOOK HER.



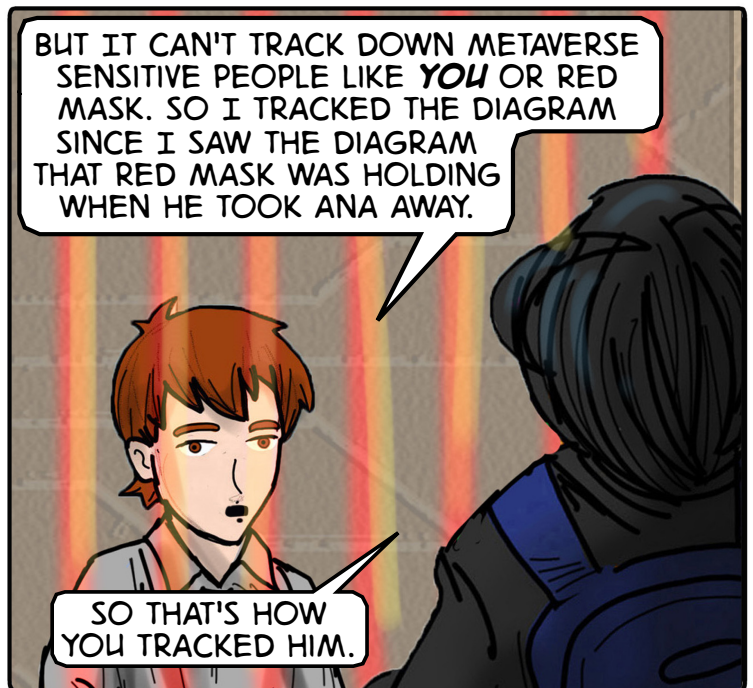
DID
YOU FIND
ANA?



NO. BUT I FOUND TAX. YOU SEE, THE
GPS BARNEY MADE WITH MAGIC IS
MORE POWERFUL THAN A NORMAL
GPS. I CAN TRACK PEOPLE OR
OBJECTS WITH IT IF I SEE THEM.

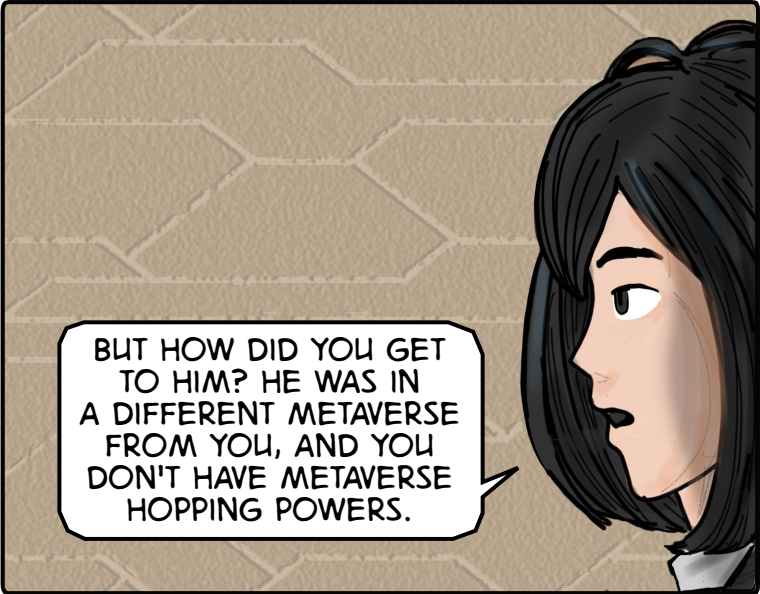


AND
I'D DO
ANYTHING
TO FIND
ANA.



BUT IT CAN'T TRACK DOWN METAVERSE
SENSITIVE PEOPLE LIKE **YOU** OR RED
MASK. SO I TRACKED THE DIAGRAM
SINCE I SAW THE DIAGRAM
THAT RED MASK WAS HOLDING
WHEN HE TOOK ANA AWAY.

SO THAT'S HOW
YOU TRACKED HIM.



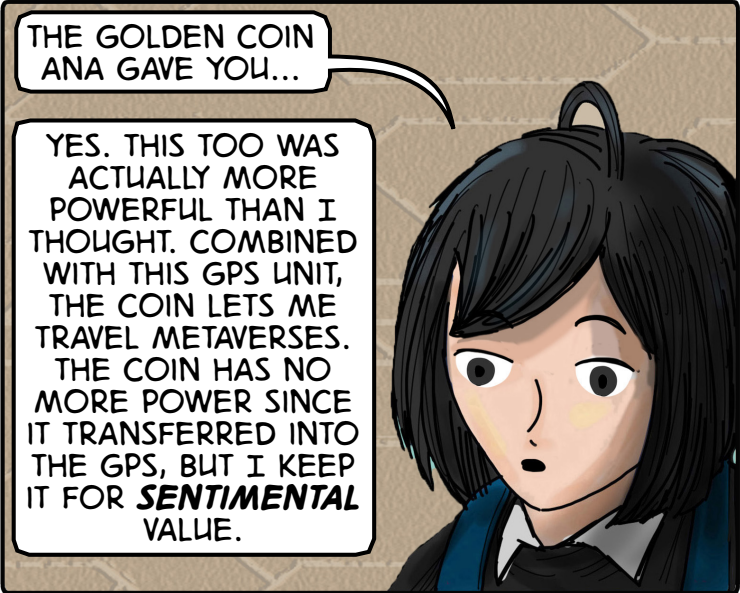
BUT HOW DID YOU GET TO HIM? HE WAS IN A DIFFERENT METAVERSE FROM YOU, AND YOU DON'T HAVE METAVERSE HOPPING POWERS.



I DIDN'T UNTIL...

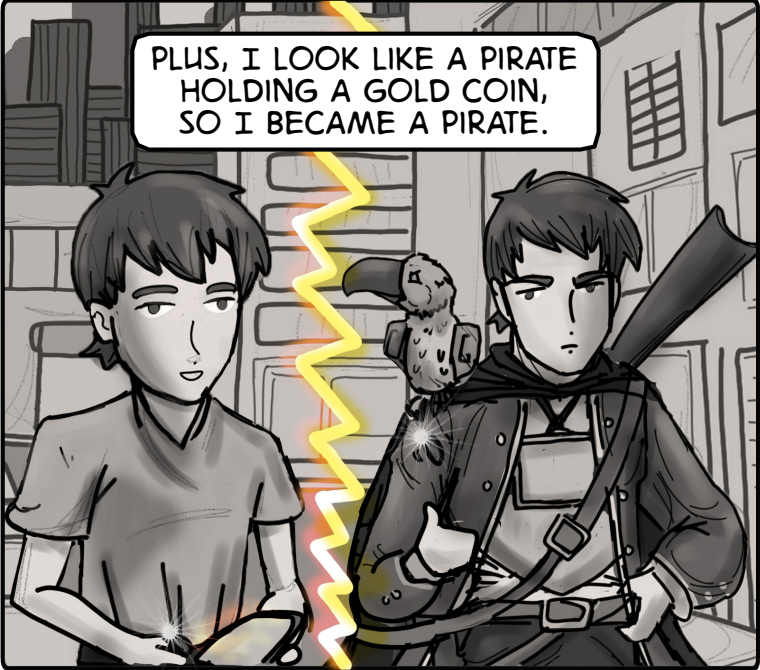


...THIS.



THE GOLDEN COIN ANA GAVE YOU...

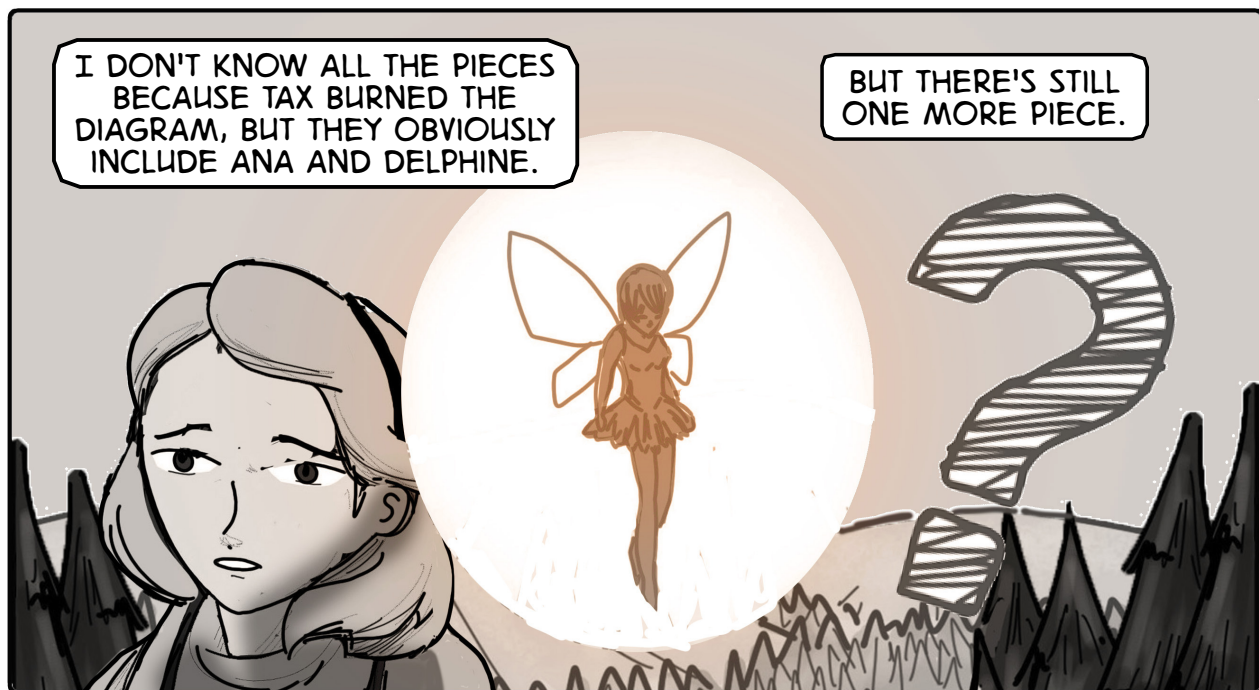
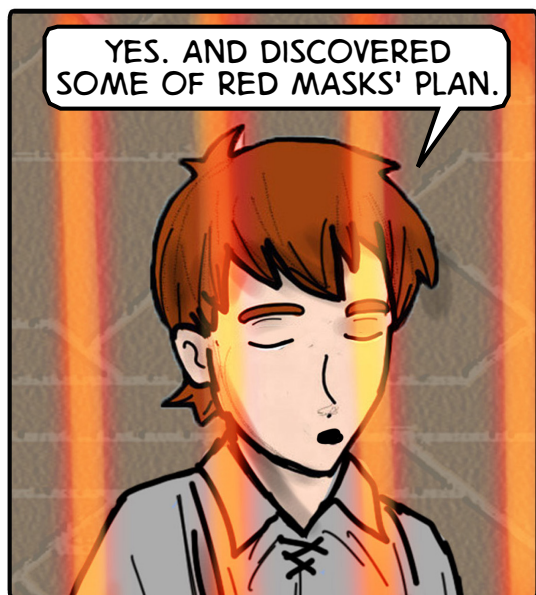
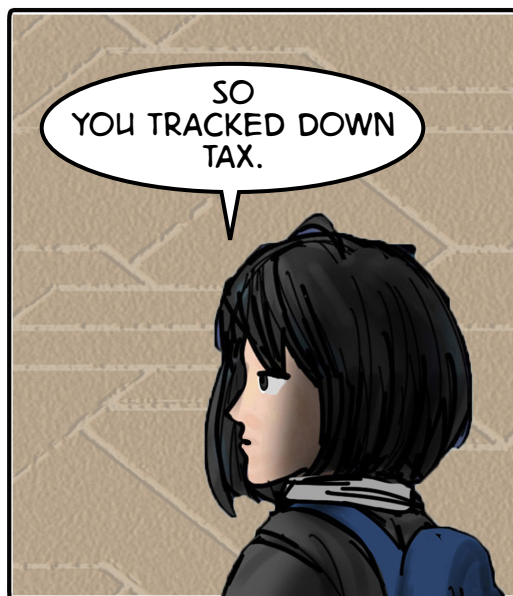
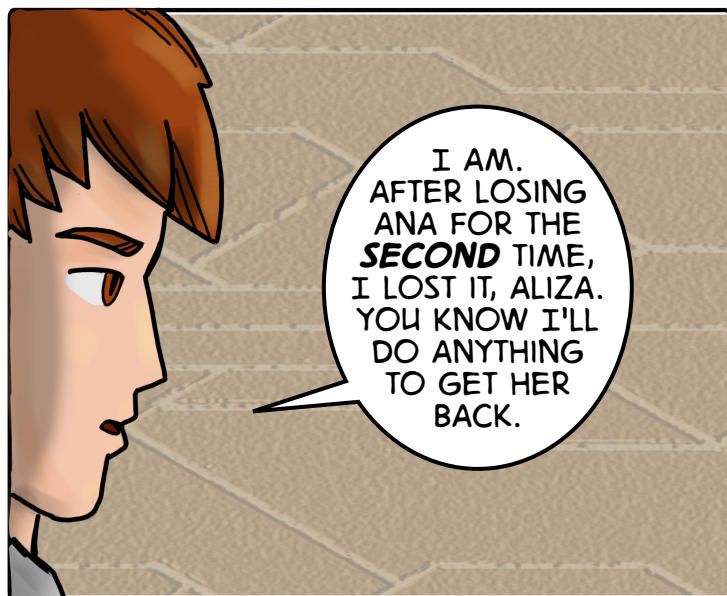
YES. THIS TOO WAS ACTUALLY MORE POWERFUL THAN I THOUGHT. COMBINED WITH THIS GPS UNIT, THE COIN LETS ME TRAVEL METAVERSES. THE COIN HAS NO MORE POWER SINCE IT TRANSFERRED INTO THE GPS, BUT I KEEP IT FOR **SENTIMENTAL** VALUE.

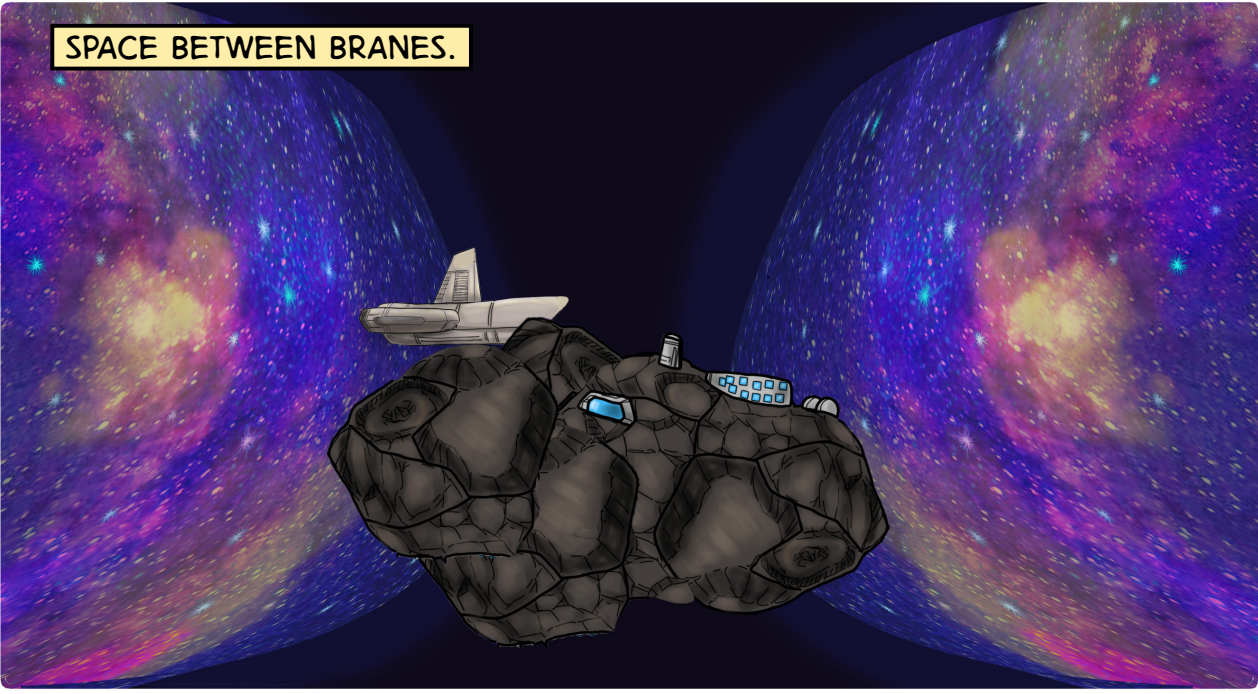
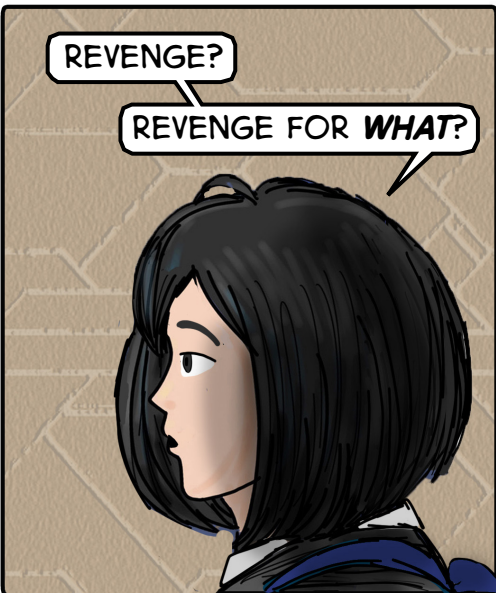
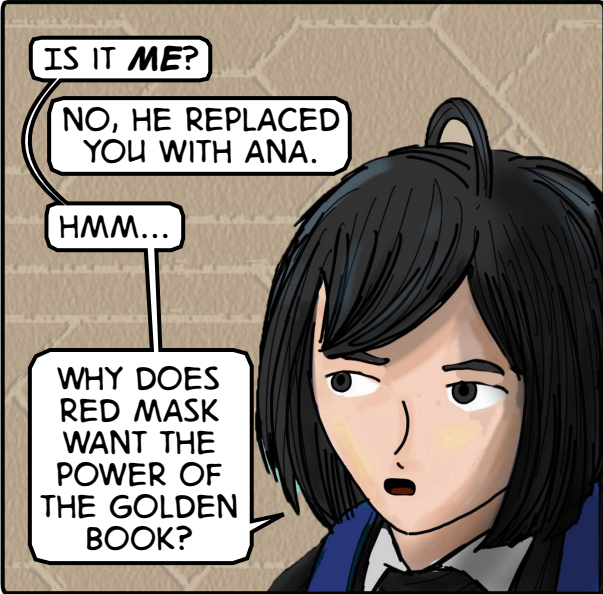


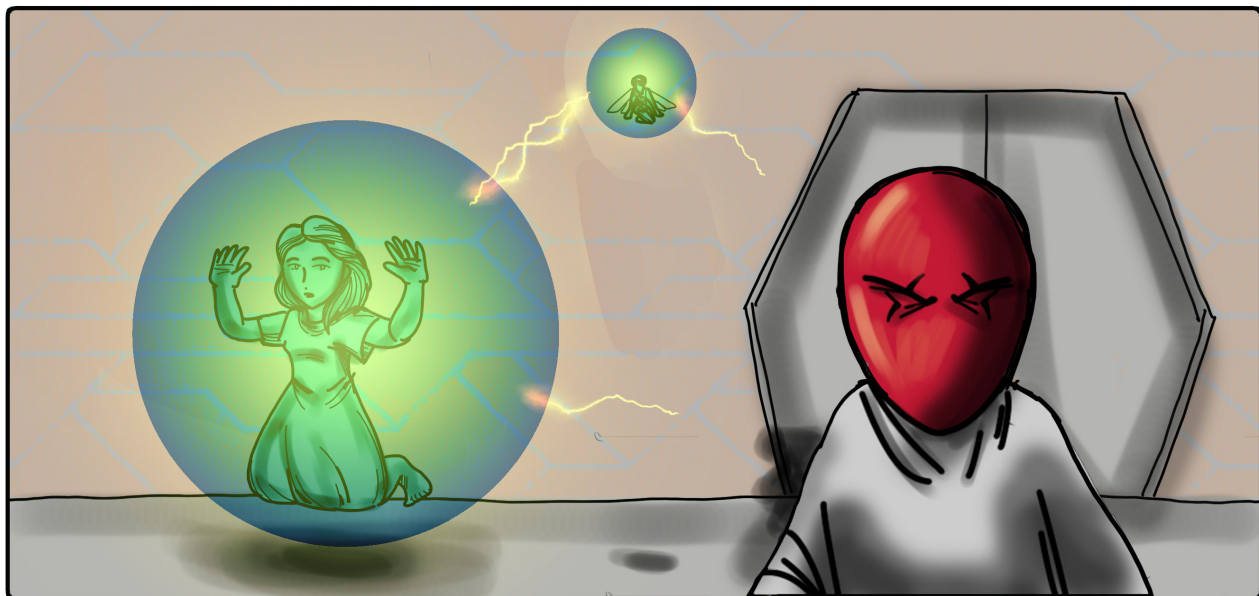
PLUS, I LOOK LIKE A PIRATE HOLDING A GOLD COIN, SO I BECAME A PIRATE.



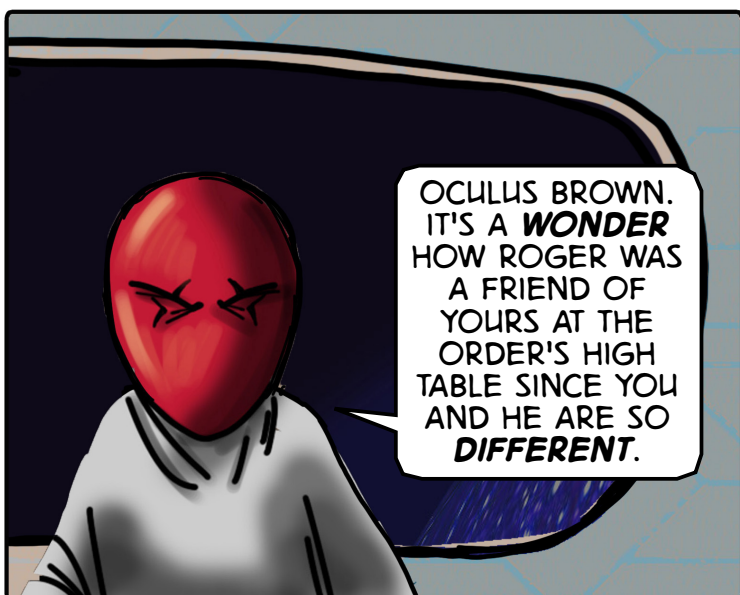
A **PIRATE**, STEVE? YOU USED TO BE SO **INNOCENT**. YOU'RE A MURDERING PIRATE NOW.



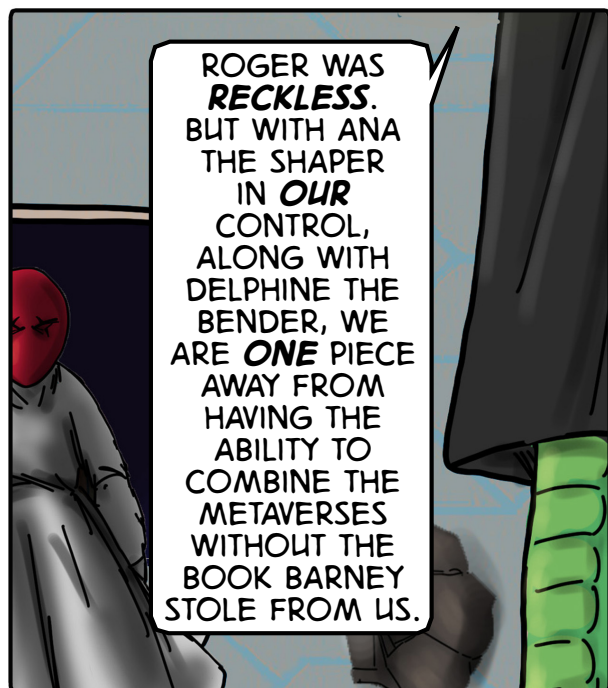




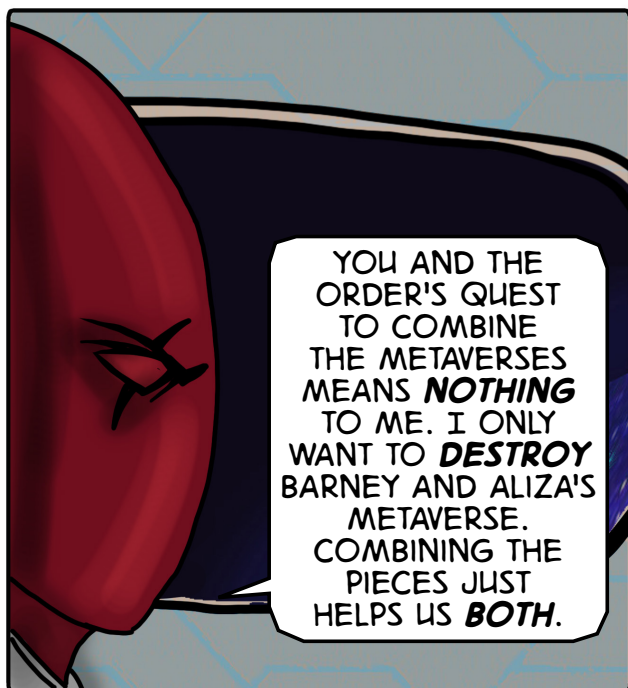
RED MASK.



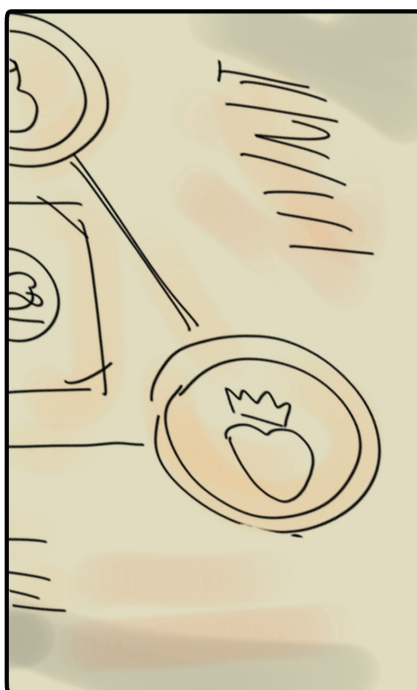
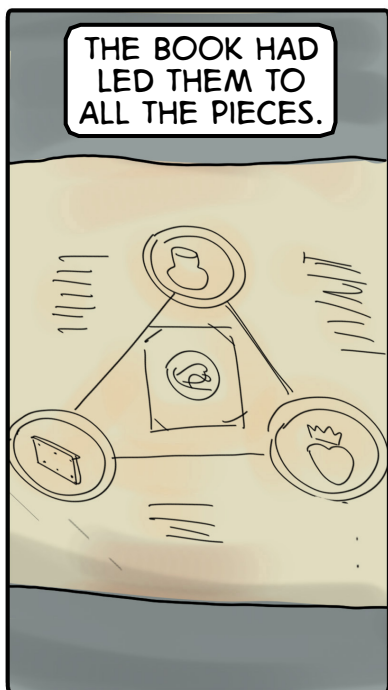
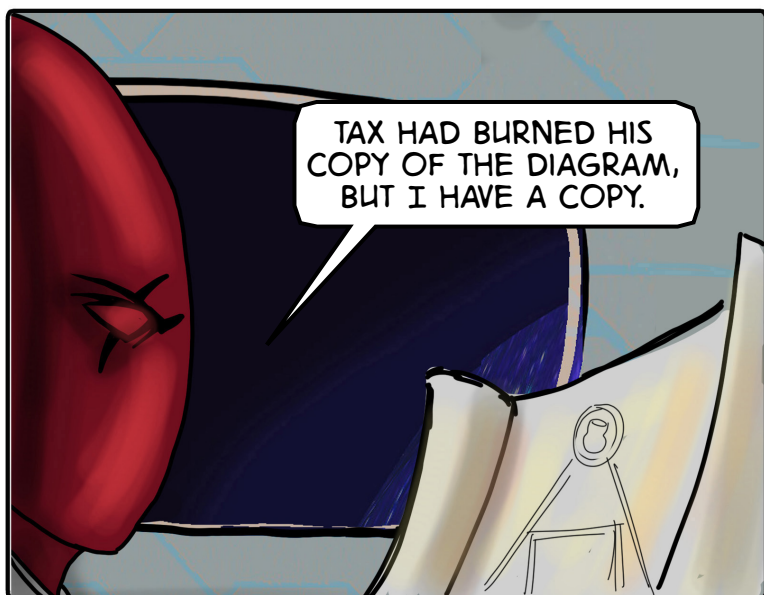
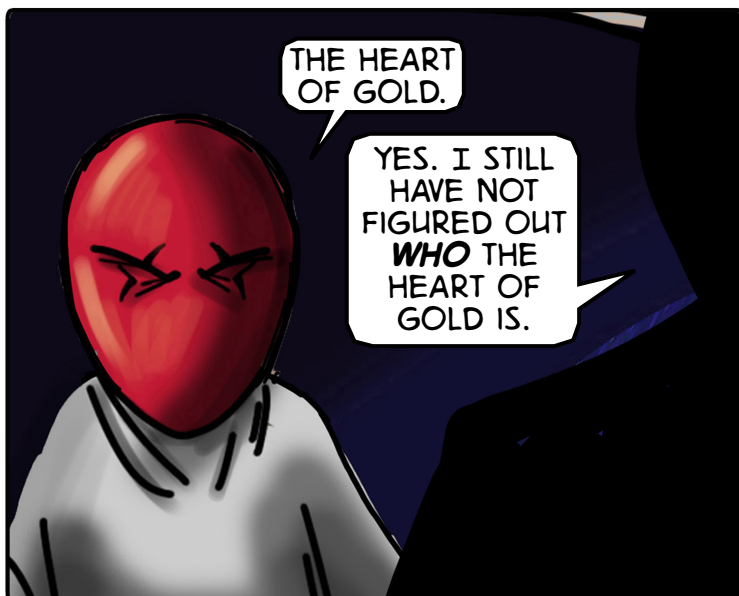
OCULUS BROWN.
IT'S A **WONDER**
HOW ROGER WAS
A FRIEND OF
YOURS AT THE
ORDER'S HIGH
TABLE SINCE YOU
AND HE ARE SO
DIFFERENT.

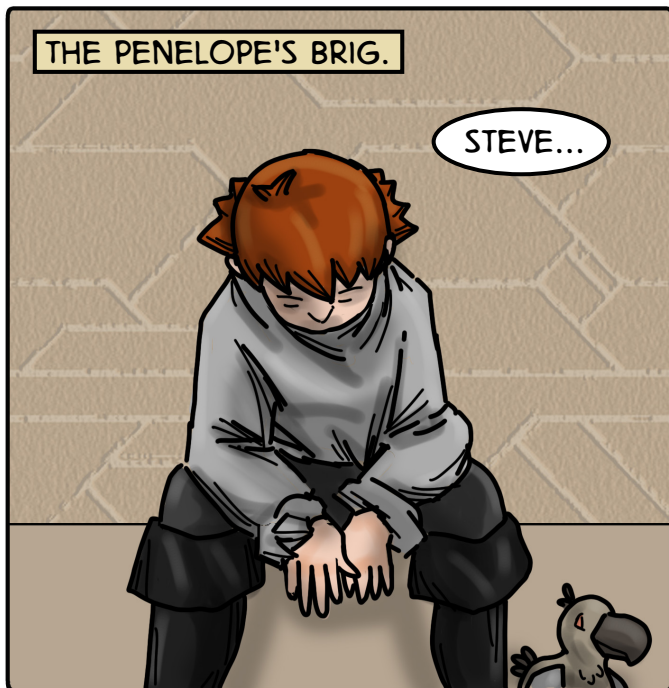
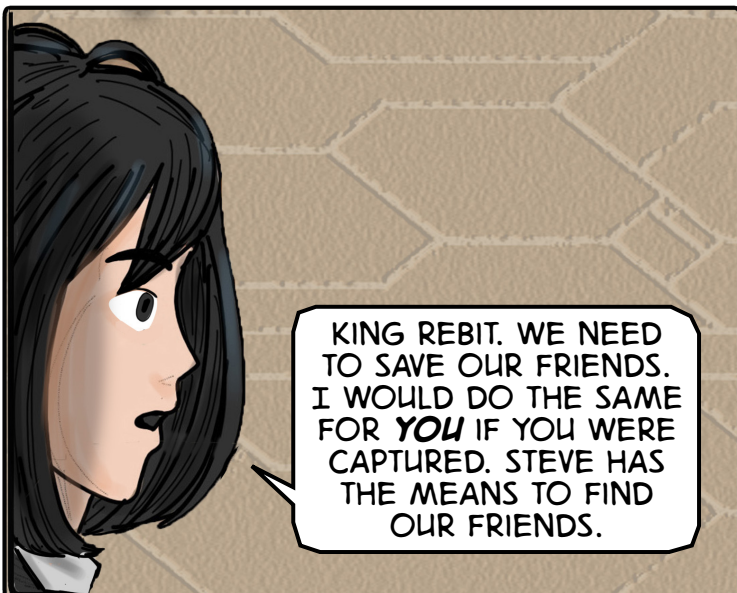


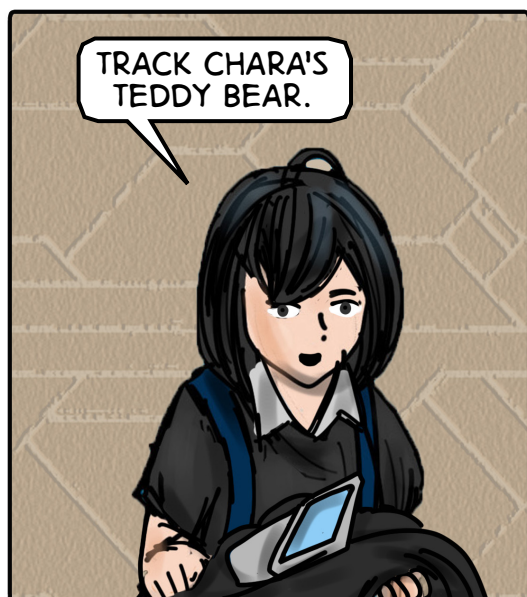
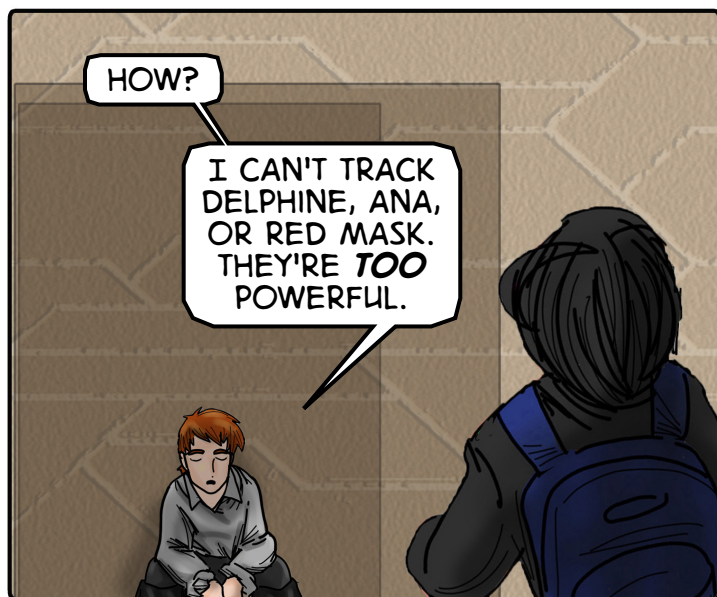
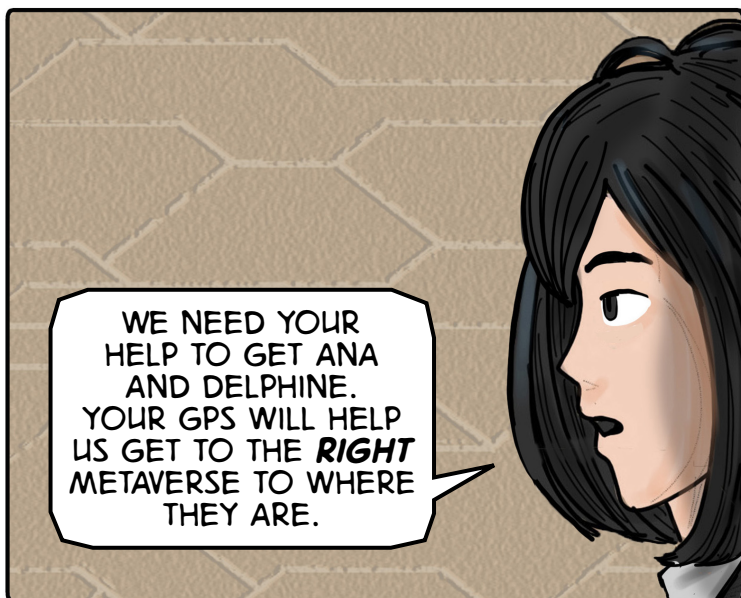
ROGER WAS
RECKLESS.
BUT WITH ANA
THE SHAPER
IN **OUR**
CONTROL,
ALONG WITH
DELPHINE THE
BENDER, WE
ARE **ONE** PIECE
AWAY FROM
HAVING THE
ABILITY TO
COMBINE THE
METAVERSES
WITHOUT THE
BOOK BARNEY
STOLE FROM US.



YOU AND THE
ORDER'S QUEST
TO COMBINE
THE METAVERSES
MEANS **NOTHING**
TO ME. I ONLY
WANT TO **DESTROY**
BARNEY AND ALIZA'S
METAVERSE.
COMBINING THE
PIECES JUST
HELPS US **BOTH.**



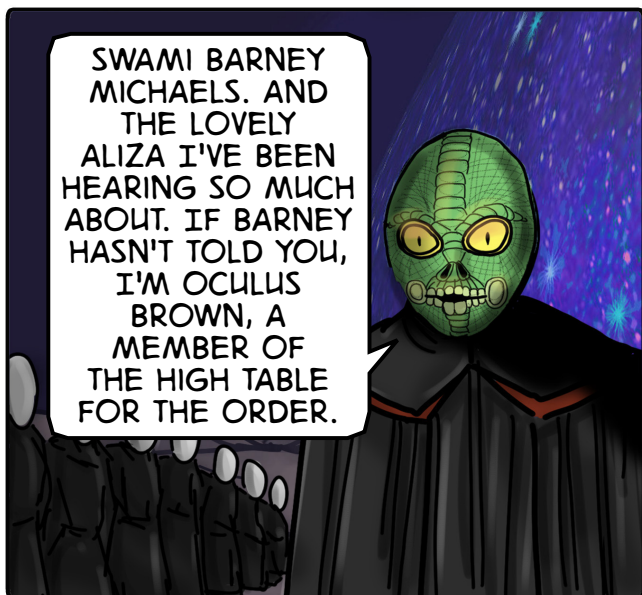




ASTEROID BASE
OF THE ORDER.



SWAMI BARNEY
MICHAELS. AND
THE LOVELY
ALIZA I'VE BEEN
HEARING SO MUCH
ABOUT. IF BARNEY
HASN'T TOLD YOU,
I'M OCULUS
BROWN, A
MEMBER OF
THE HIGH TABLE
FOR THE ORDER.



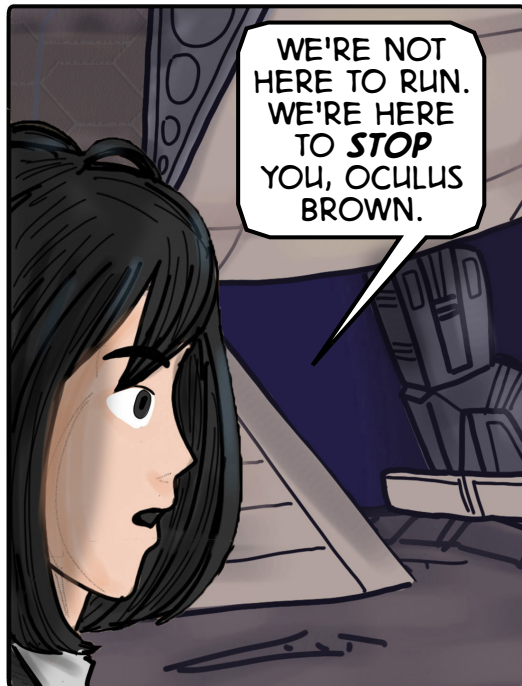
WHAT'S UP,
LIZARD FACE?

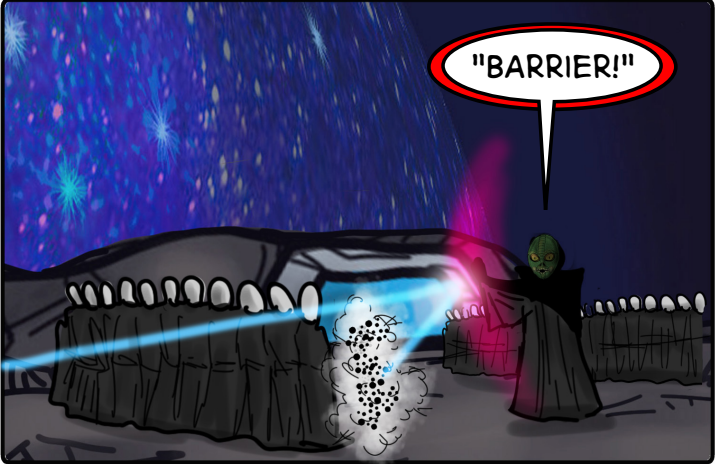
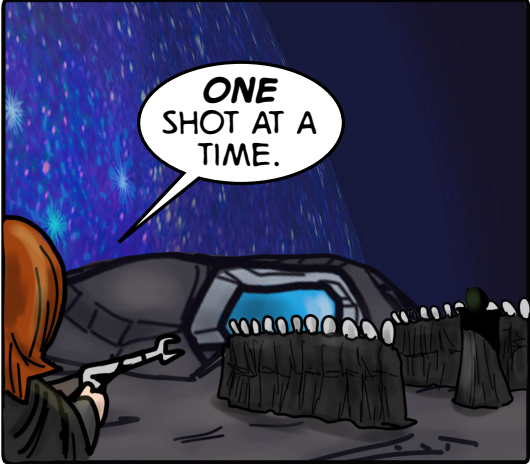


I SEE THAT
QUITTING
YOUR JOB AS
JANITOR
HASN'T
CORRECTED
YOUR **MANNERS**.
8000 YEARS
OF AVOIDING
THE INEVITABLE
HAS NOW COME
TO AN END.
NO MORE
RUNNING.



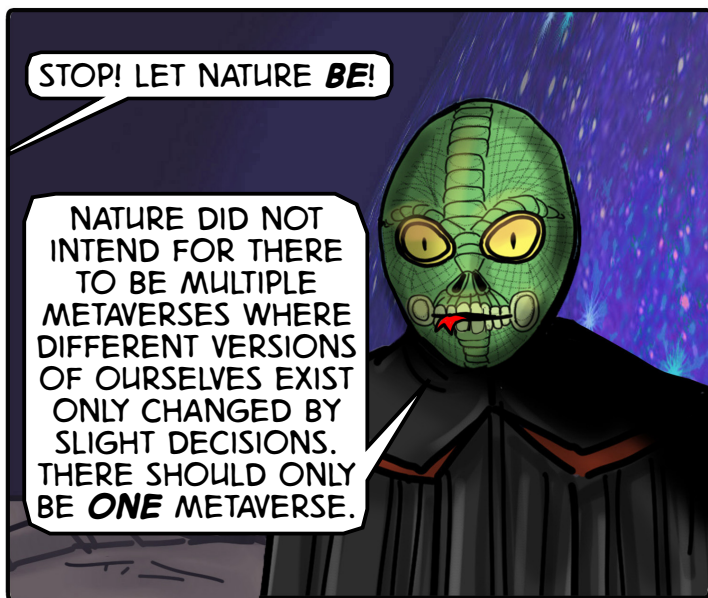
WE'RE NOT
HERE TO RUN.
WE'RE HERE
TO **STOP**
YOU, OCULUS
BROWN.





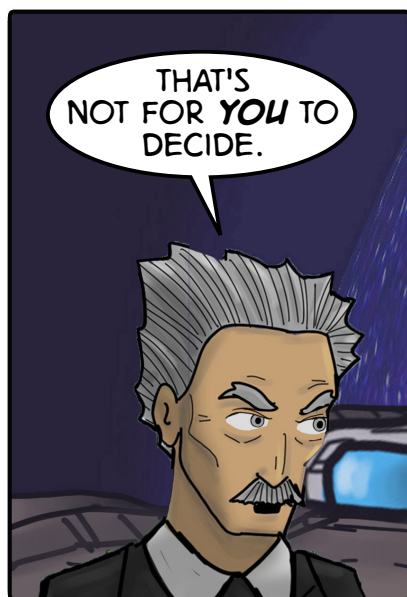


ALIZA,
THEY GOT KING
REBIT!



STOP! LET NATURE *BE*!

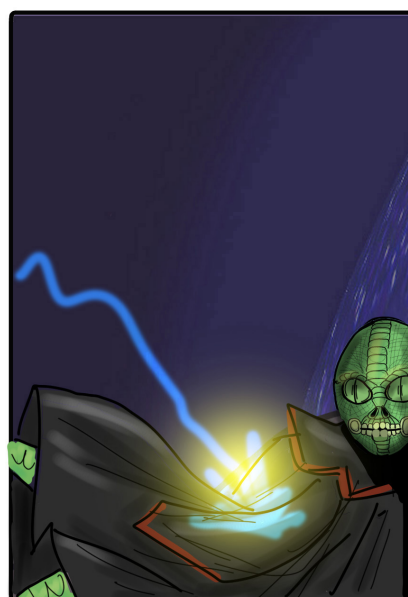
NATURE DID NOT
INTEND FOR THERE
TO BE MULTIPLE
METAVERSES WHERE
DIFFERENT VERSIONS
OF OURSELVES EXIST
ONLY CHANGED BY
SLIGHT DECISIONS.
THERE SHOULD ONLY
BE *ONE* METAVERSE.



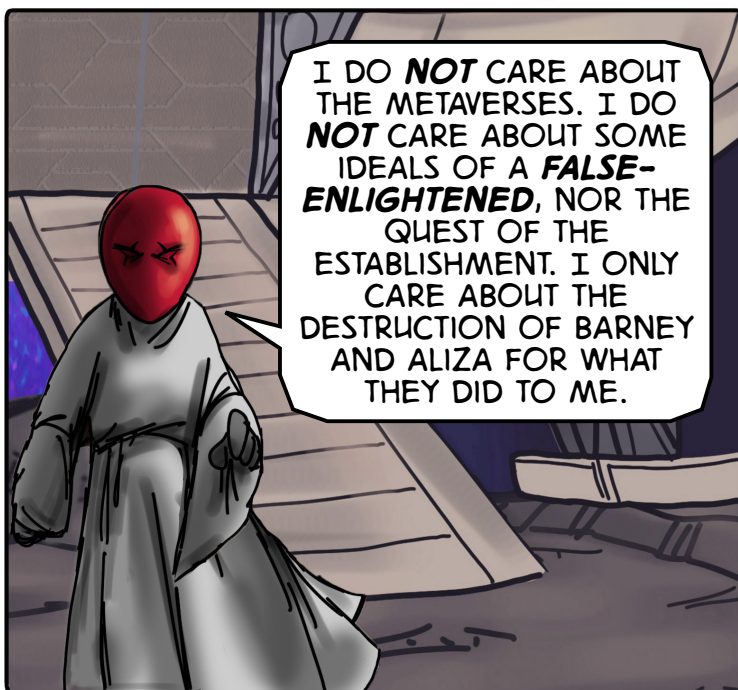
THAT'S
NOT FOR *YOU* TO
DECIDE.



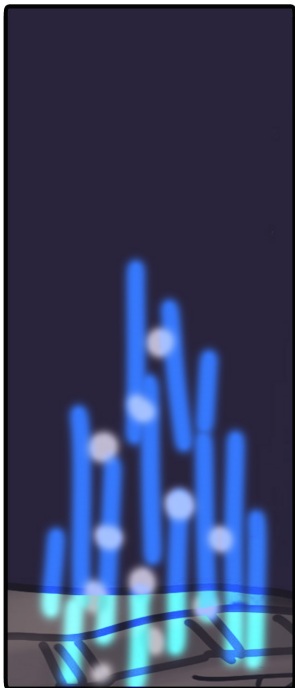
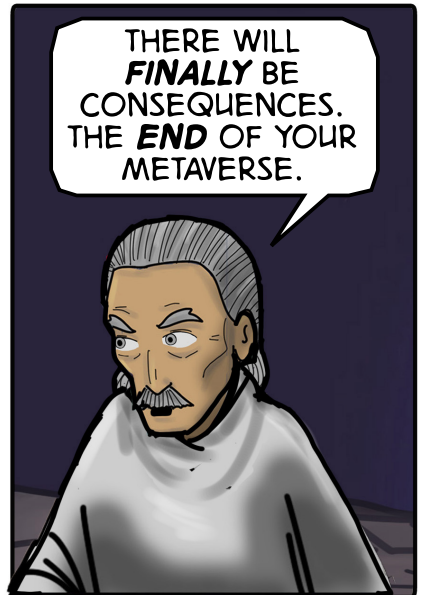
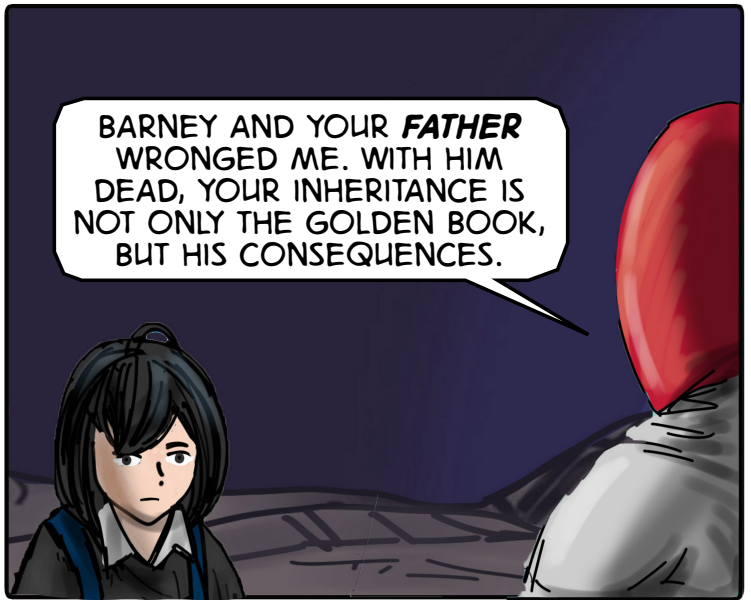
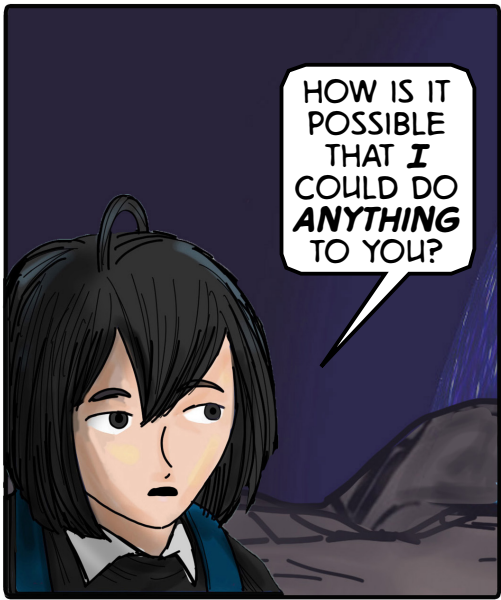
THE ORDER WAS
CREATED TO ESTABLISH
ORDER. WE *WILL*
MAINTAIN ORDER.



WHAT...*WHY*?



I DO *NOT* CARE ABOUT
THE METAVERSES. I DO
NOT CARE ABOUT SOME
IDEALS OF A *FALSE-
ENLIGHTENED*, NOR THE
QUEST OF THE
ESTABLISHMENT. I ONLY
CARE ABOUT THE
DESTRUCTION OF BARNEY
AND ALIZA FOR WHAT
THEY DID TO ME.

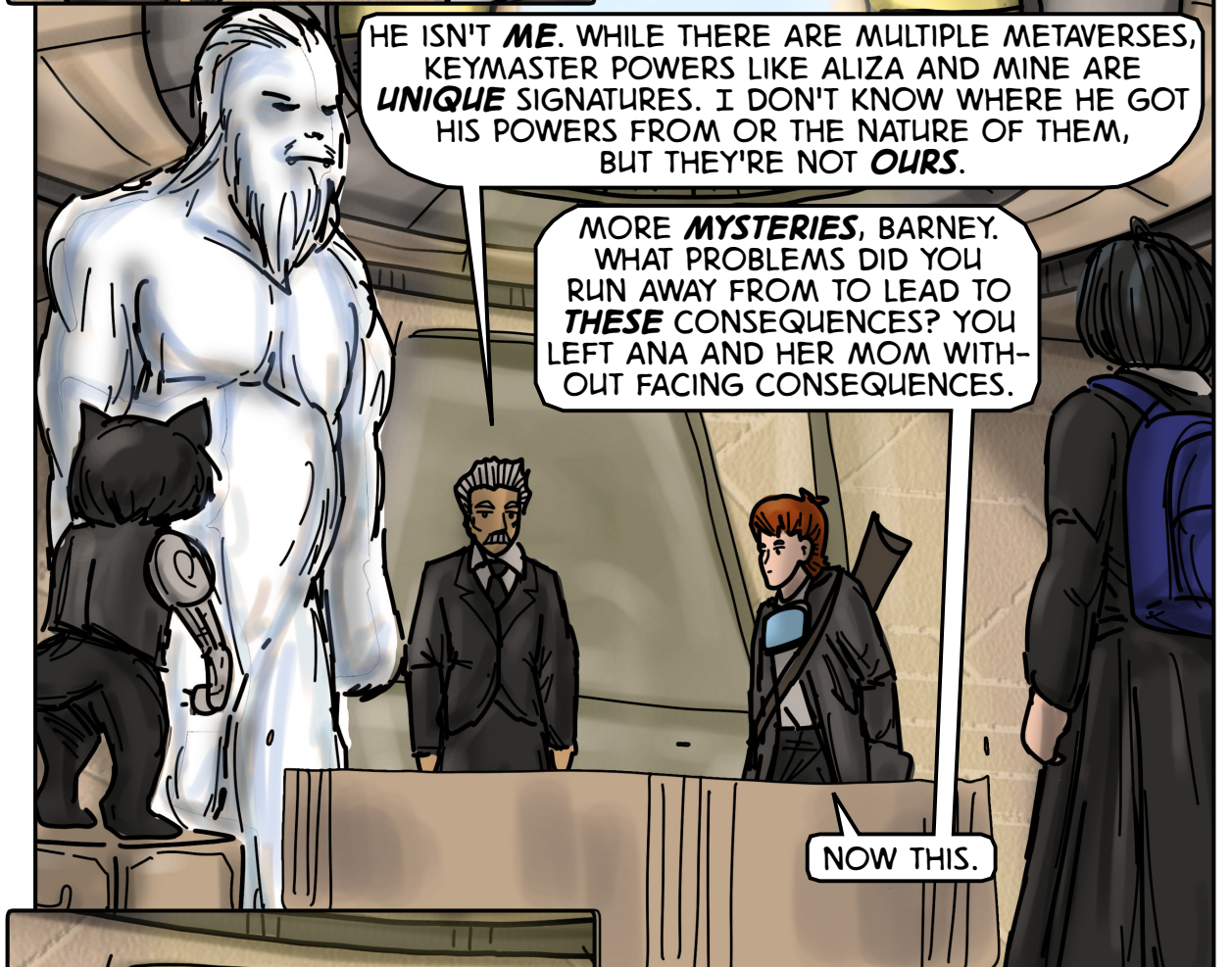




WE HAVE
TO **STOP**
RED MASK.



WE **CANNOT** STOP
ANOTHER SWAMI
BARNEY MICHAELS.



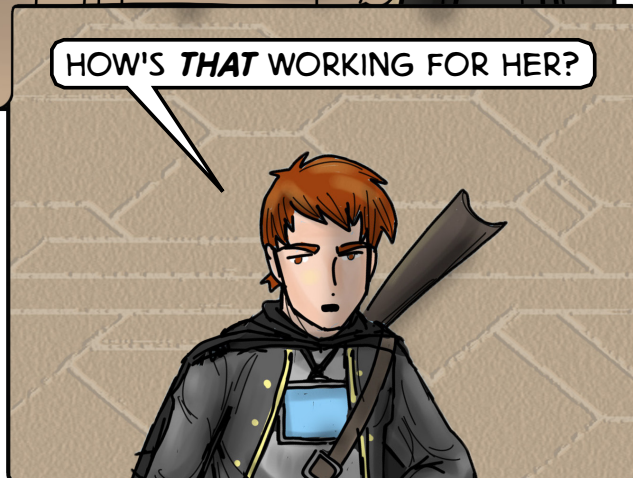
HE ISN'T **ME**. WHILE THERE ARE MULTIPLE METAVERSES,
KEYMASTER POWERS LIKE ALIZA AND MINE ARE
UNIQUE SIGNATURES. I DON'T KNOW WHERE HE GOT
HIS POWERS FROM OR THE NATURE OF THEM,
BUT THEY'RE NOT **OURS**.

MORE **MYSTERIES**, BARNEY.
WHAT PROBLEMS DID YOU
RUN AWAY FROM TO LEAD TO
THESE CONSEQUENCES? YOU
LEFT ANA AND HER MOM WITH-
OUT FACING CONSEQUENCES.

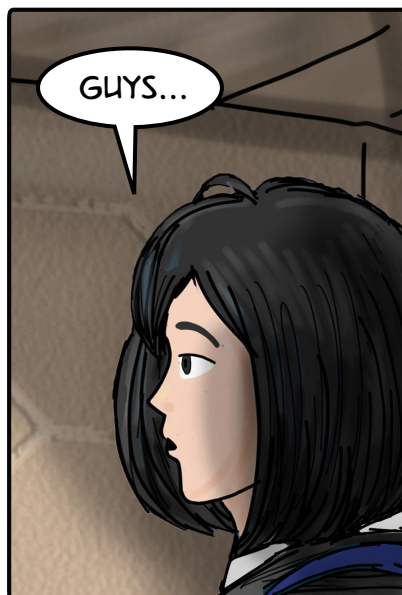
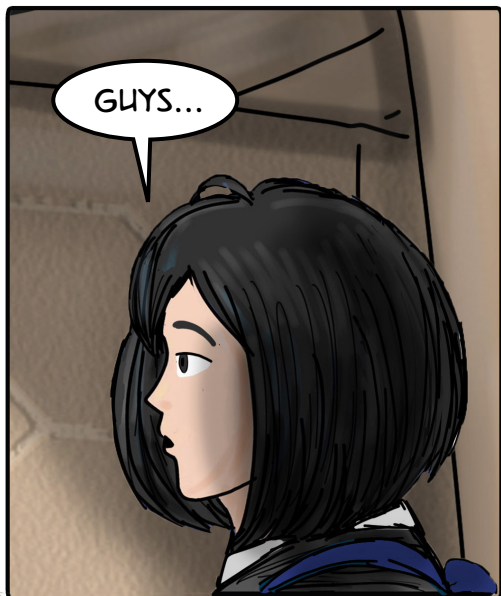
NOW THIS.



THAT WAS TO
KEEP HER SAFE.

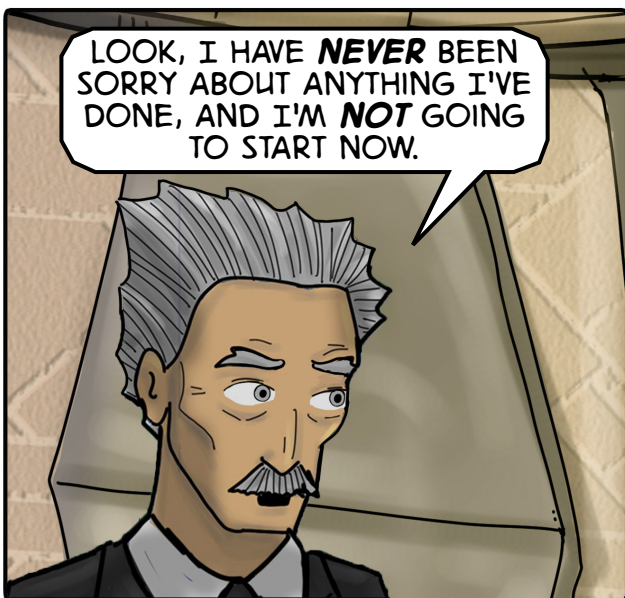


HOW'S **THAT** WORKING FOR HER?

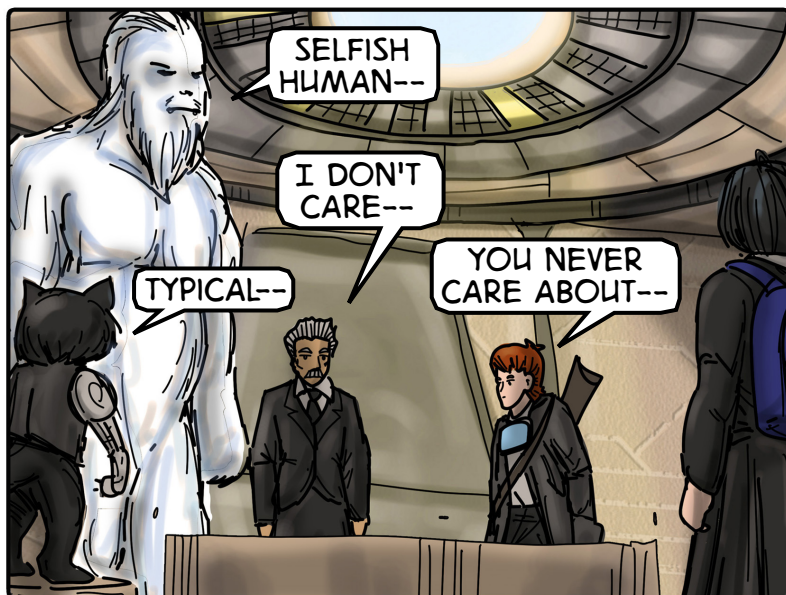




THIS HUMAN
SHOULD BE
RESPONSIBLE
FOR HIS OWN
MISTAKES.



LOOK, I HAVE **NEVER** BEEN
SORRY ABOUT ANYTHING I'VE
DONE, AND I'M **NOT** GOING
TO START NOW.

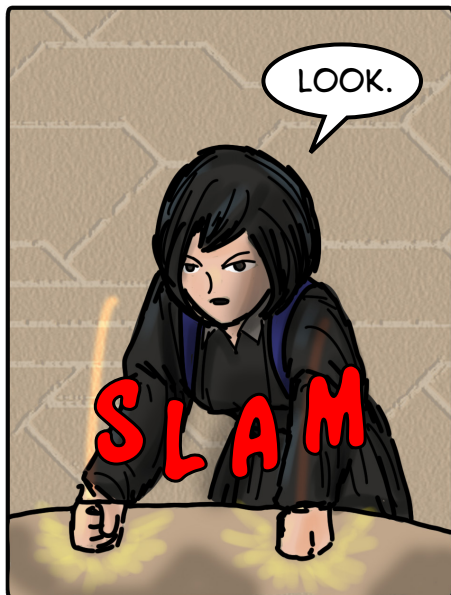


SELFISH
HUMAN--

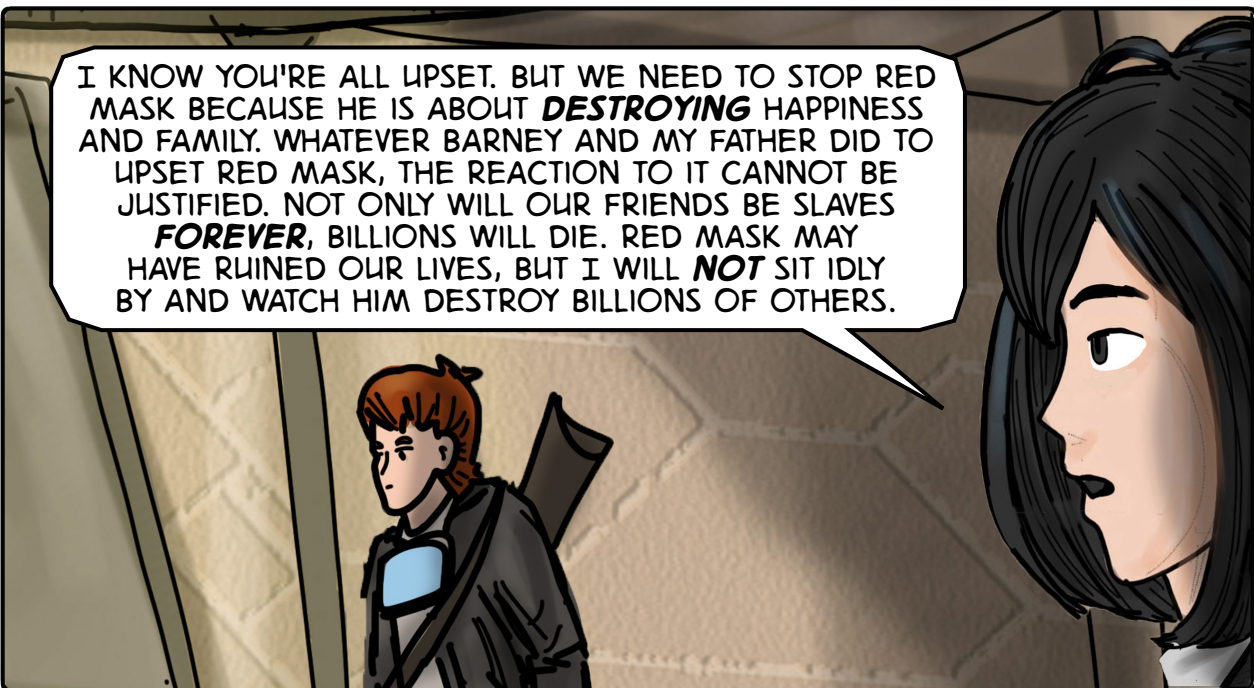
I DON'T
CARE--

TYPICAL--

YOU NEVER
CARE ABOUT--



LOOK.

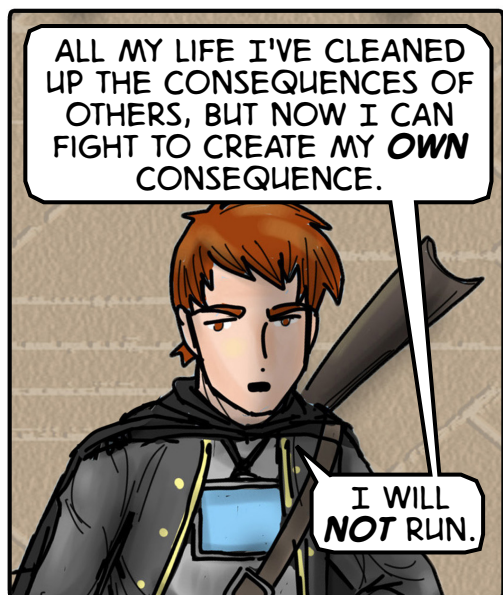
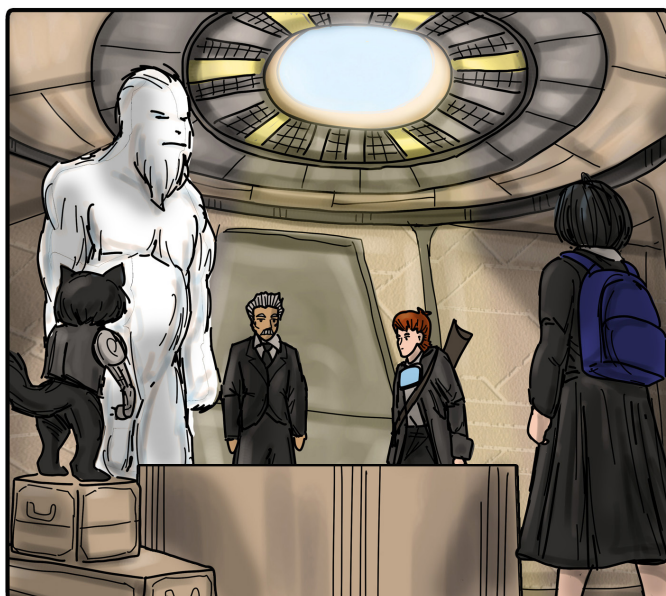


I KNOW YOU'RE ALL UPSET. BUT WE NEED TO STOP RED MASK BECAUSE HE IS ABOUT **DESTROYING** HAPPINESS AND FAMILY. WHATEVER BARNEY AND MY FATHER DID TO UPSET RED MASK, THE REACTION TO IT CANNOT BE JUSTIFIED. NOT ONLY WILL OUR FRIENDS BE SLAVES **FOREVER**, BILLIONS WILL DIE. RED MASK MAY HAVE RUINED OUR LIVES, BUT I WILL **NOT** SIT IDLY BY AND WATCH HIM DESTROY BILLIONS OF OTHERS.



I HAVE **ALWAYS** RUN AND LET THE METAVERSES **BE**. THE METAVERSE **ALWAYS** FINDS A WAY TO BALANCE ON ITS OWN.

IT'S TIME TO RUN, ALIZA.



ALL MY LIFE I'VE CLEANED UP THE CONSEQUENCES OF OTHERS, BUT NOW I CAN FIGHT TO CREATE MY **OWN** CONSEQUENCE.

I WILL **NOT** RUN.



PENELOPE WOULDN'T WANT ME TO GET REVENGE, BUT SHE WOULD **DEFINITELY** WANT ME TO HELP ALIZA STOP RED MASK OR **DIE** TRYING. SO I'LL DO WHAT SHE WANTS ME TO DO FOR A CHANGE.

I WILL **NOT** RUN.



I AM BEING SELFISH. LIFE DEBT OR NOT, ALIZA ALWAYS IS DIRECTED BY HER KIND HEART.

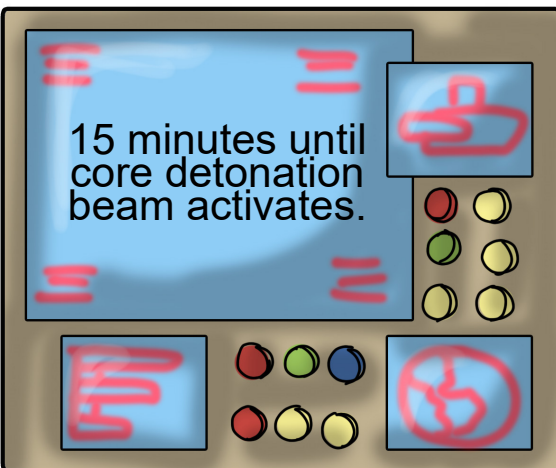
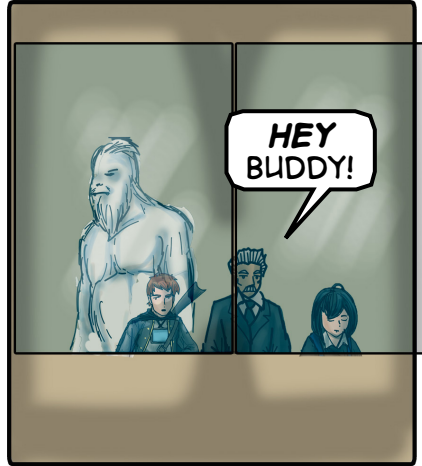
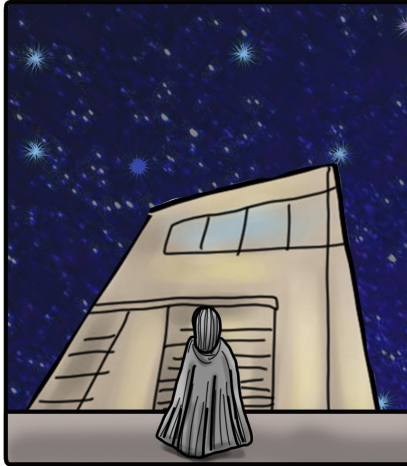
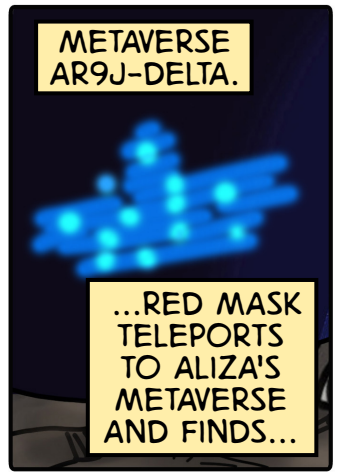
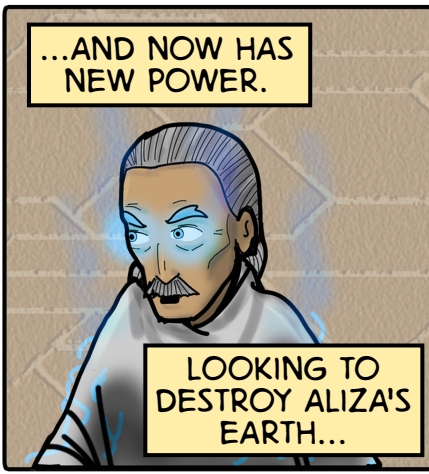
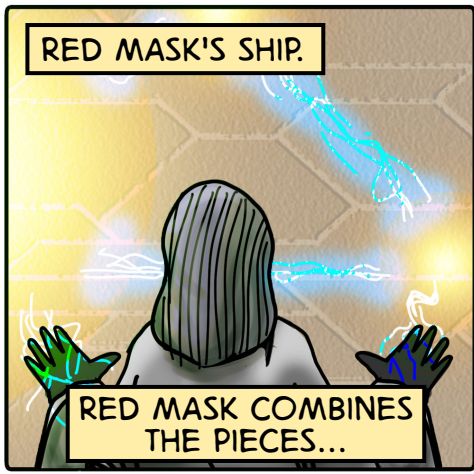
I WILL NOT RUN AWAY FROM THE CHANCE TO BE ON THE SIDE OF KINDNESS.

BARNEY? PLEASE?



⇒SIGH⇐

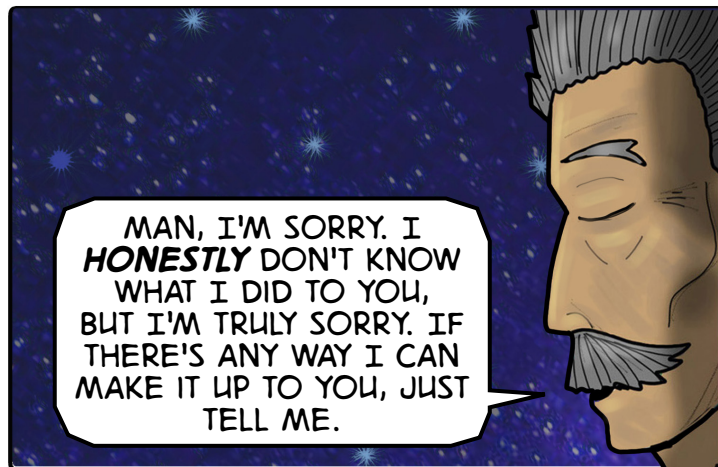
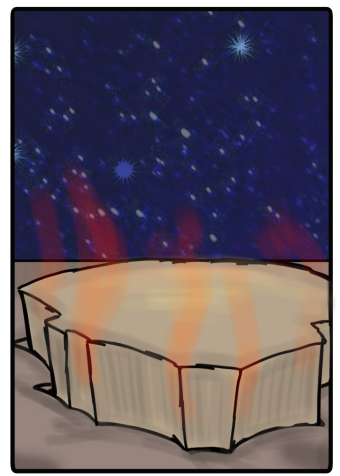
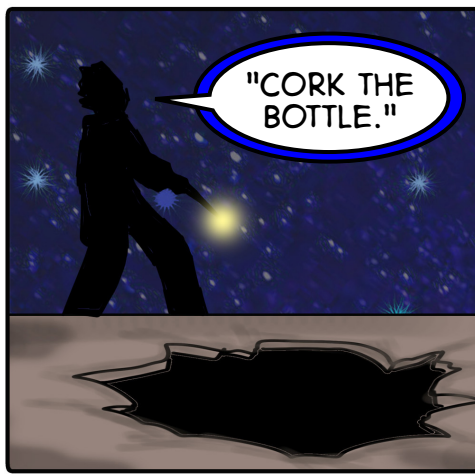
8000 YEARS WAS A LONG "RUN." GUESS IT'S TIME TO FACE A CONSEQUENCE.

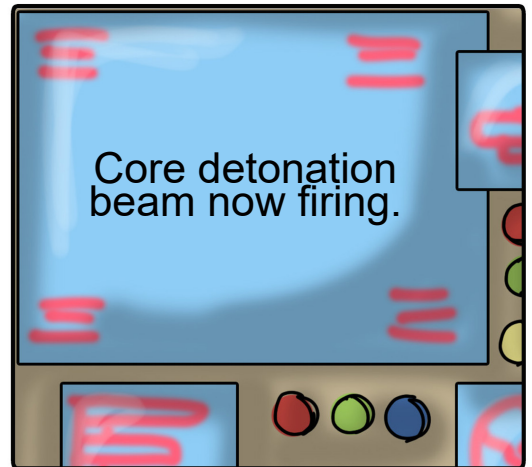
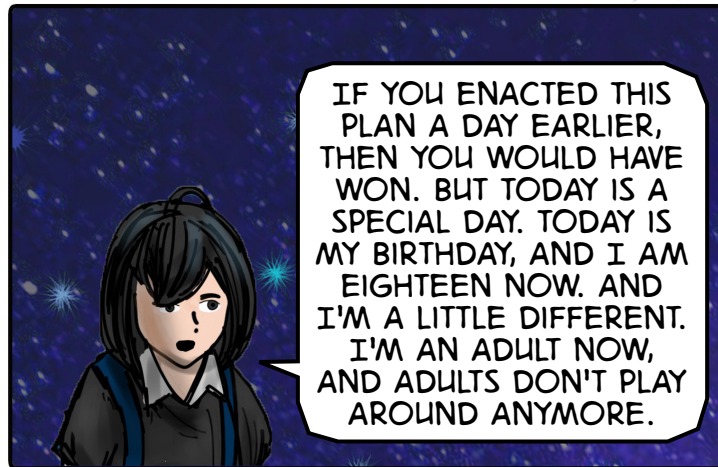


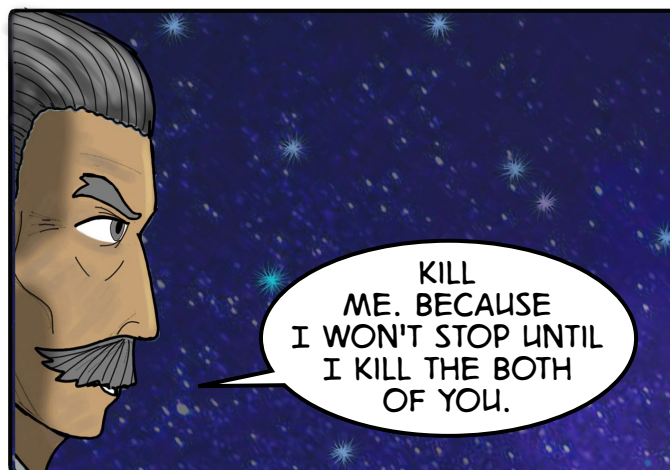
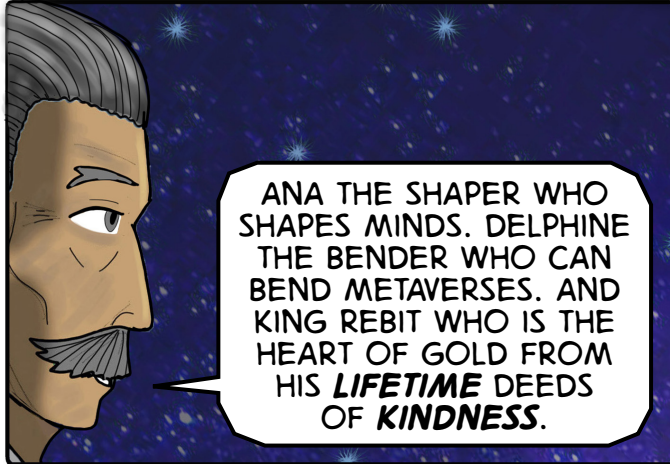


AS CAPTAIN GEEPLUS CHOOSES TO SAVE HIS FRIENDS BY BLASTING A HOLE IN THE HULL NEAR HIMSELF, THE EXPLOSION HITS HIMSELF INTO SPACE.

THE HULL BREECH ALSO PUTS THE ARTIFICIAL ATMOSPHERE AT RISK.

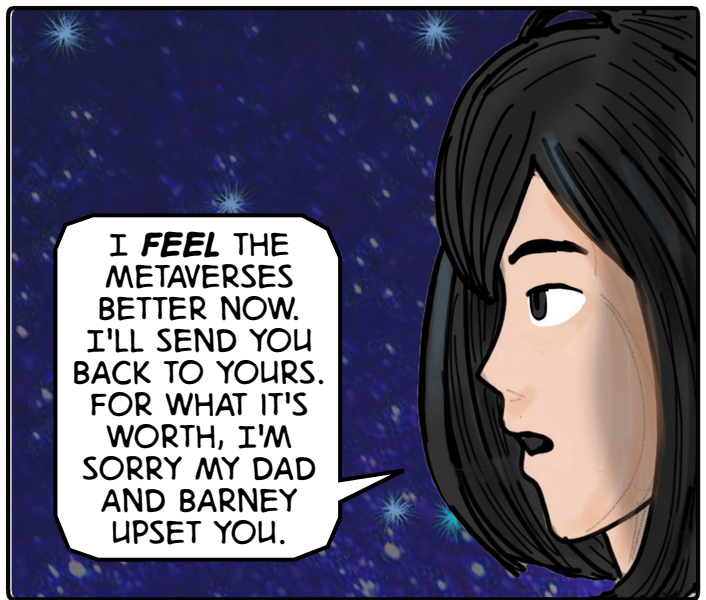




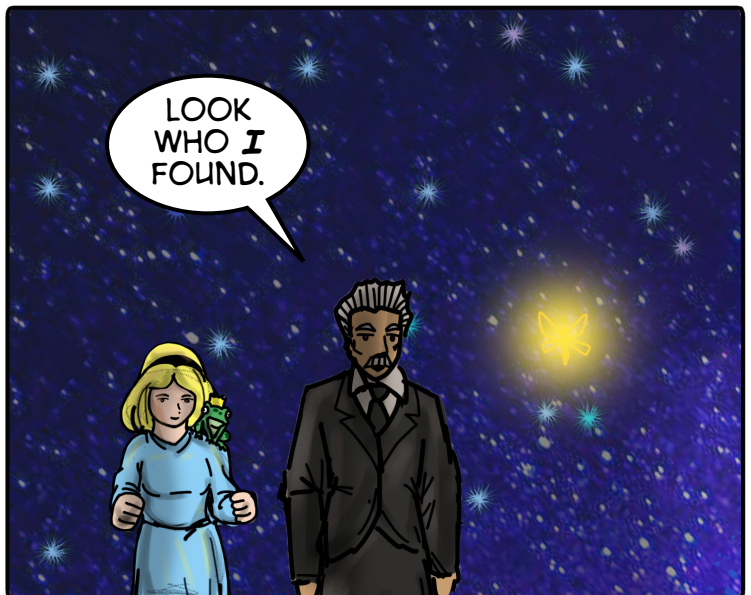
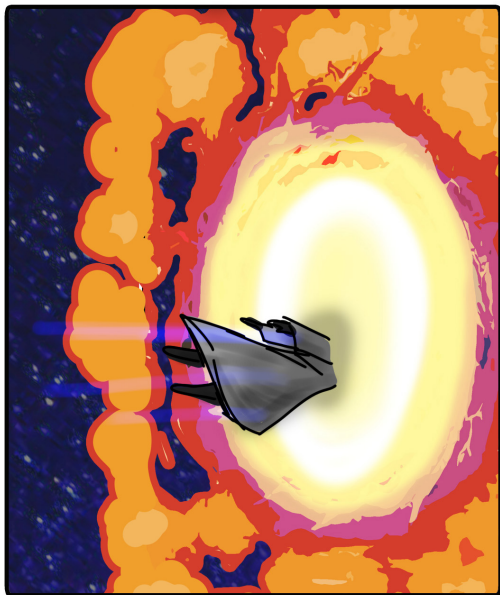




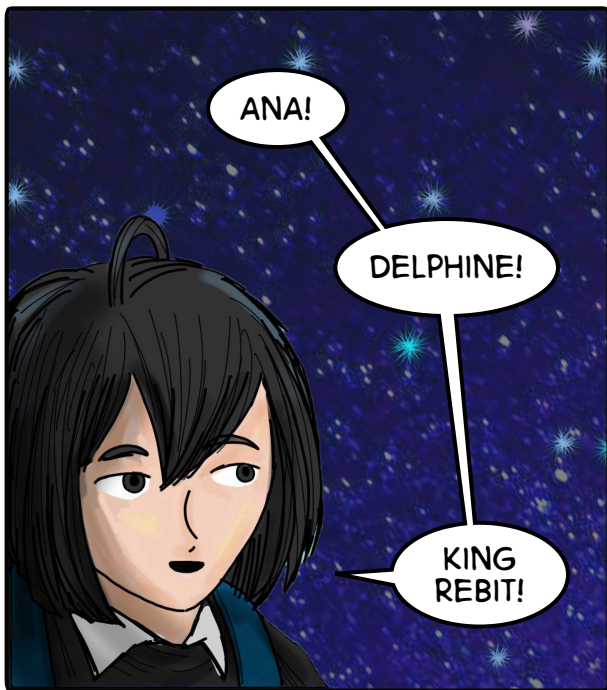
"LEECH."



I **FEEL** THE METAVERSES BETTER NOW. I'LL SEND YOU BACK TO YOURS. FOR WHAT IT'S WORTH, I'M SORRY MY DAD AND BARNEY UPSET YOU.



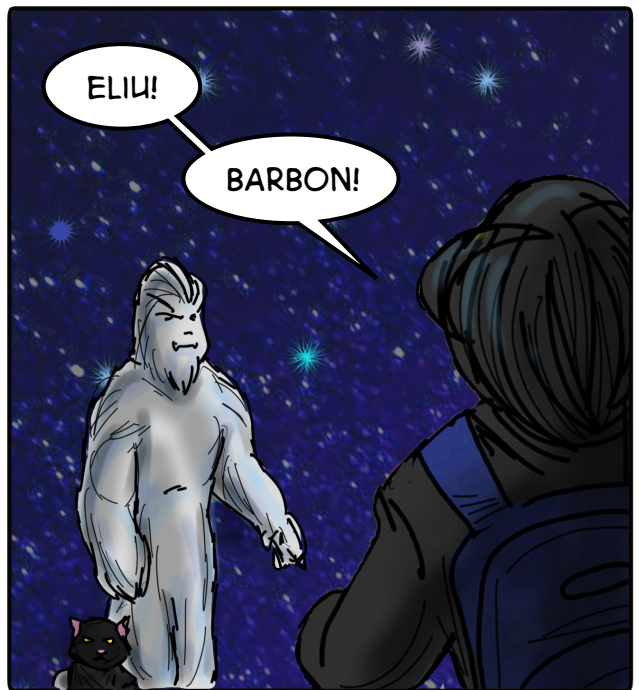
LOOK WHO **I** FOUND.



ANA!

DELPHINE!

KING REBIT!



ELIU!

BARBON!

