



5

passageways

through the

METaverse

Pete Nguyen
Jose Gutierrez

passageways

through the

METaverse

created by
Paul Nguyen & Pete Nguyen

Pete Nguyen

Writer, Letterer

Jose Gutierrez

Art, Cover

Paul Nguyen

Editor

Passageways through the Metaverse is a comic about Aliza and her father's crazy, cynical friend, Barney, and their adventures in different metaverses using a golden book that has a troublesome sense of humor. Sometimes the metaverse they visit is an alternate universe, and sometimes it's just a strange place in the universe altogether.

Throughout their adventures, Barney wants to get out of the adventure as soon as possible because he's been there and done that for over 8000 years, but Aliza wants to connect with the people. Sometimes there's a lesson to be learned, but not if Barney can help it.

Issue 5

"Red Mask"



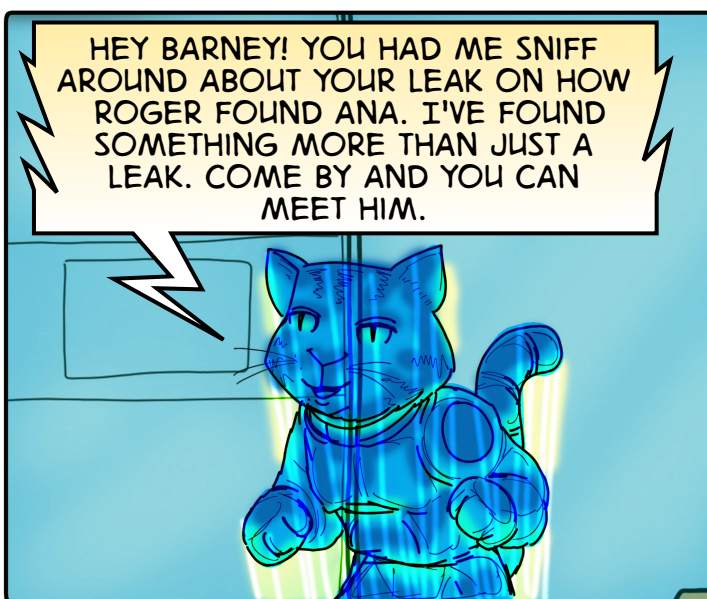
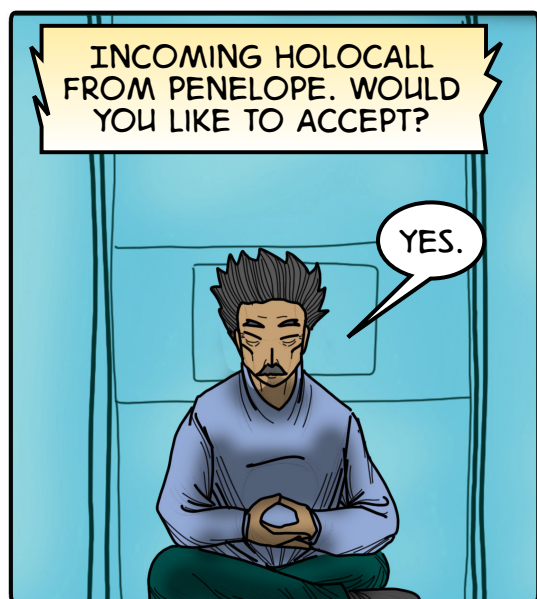
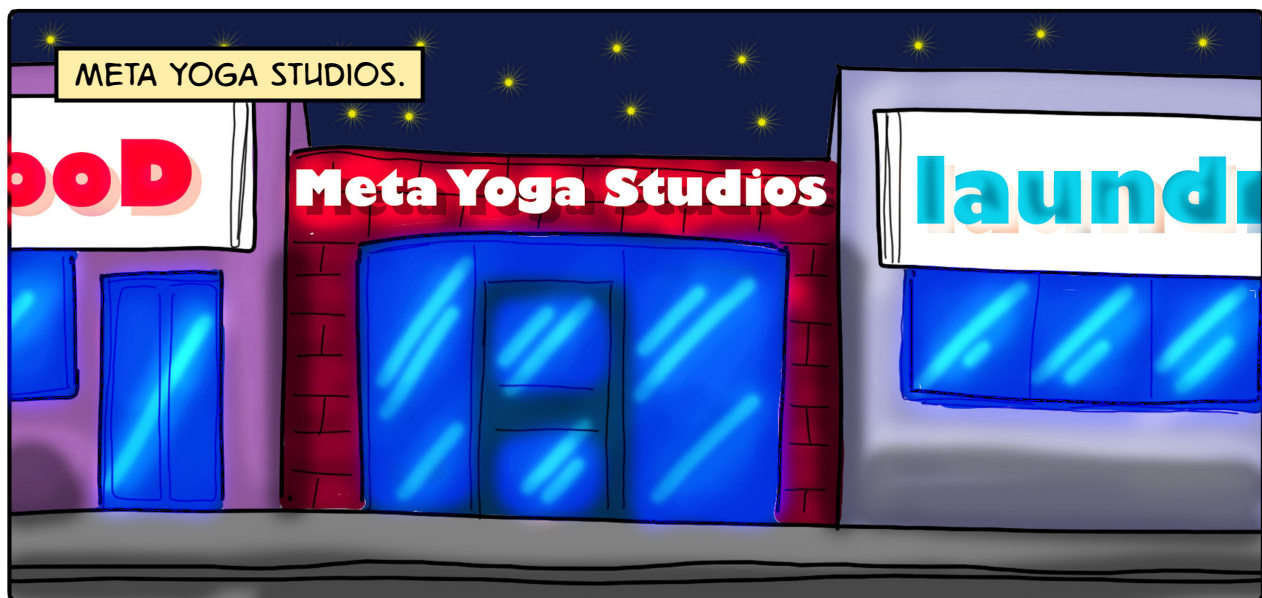
PPN Creations

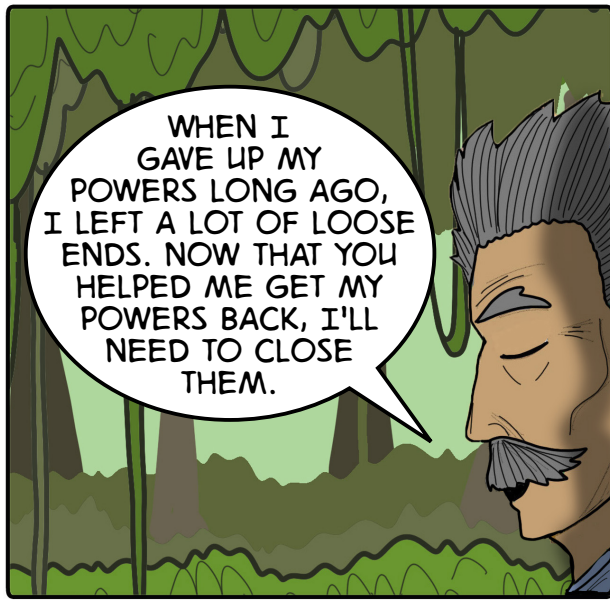
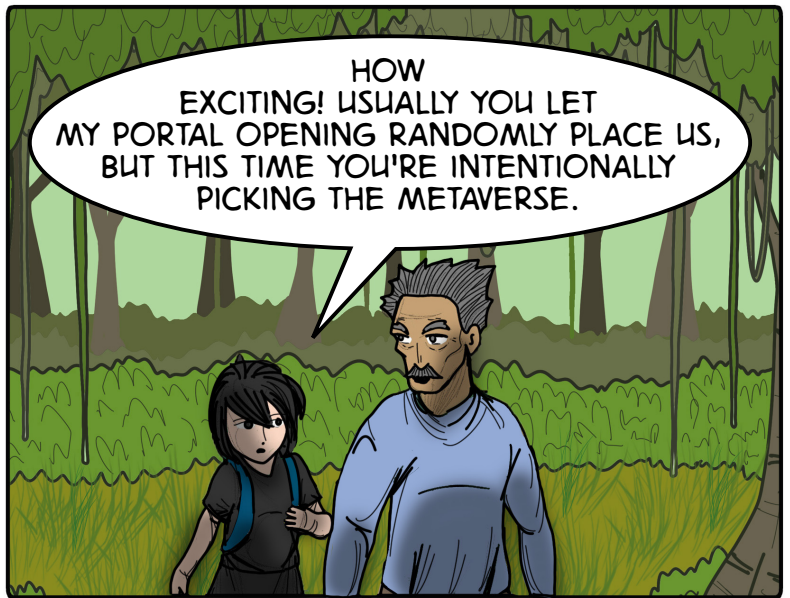
Pete Nguyen - President
Paul Nguyen - Chief Operating Officer
Charles Simon - Business Advisor
Rem Scherzinger - Business Consultant
Kevin Nguyen - Research, Website
Jason Schulte - PPN Creations Logo
Judy Nguyen - Marketing
Van Vo - Promotion Coordinator

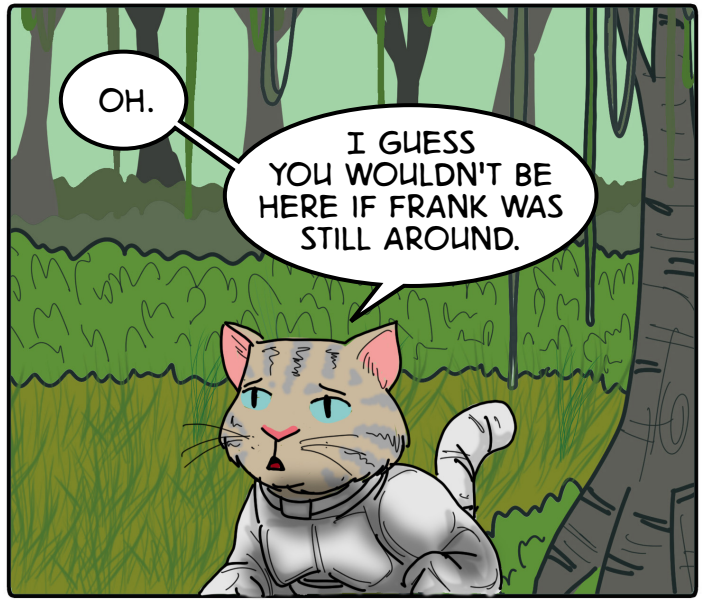
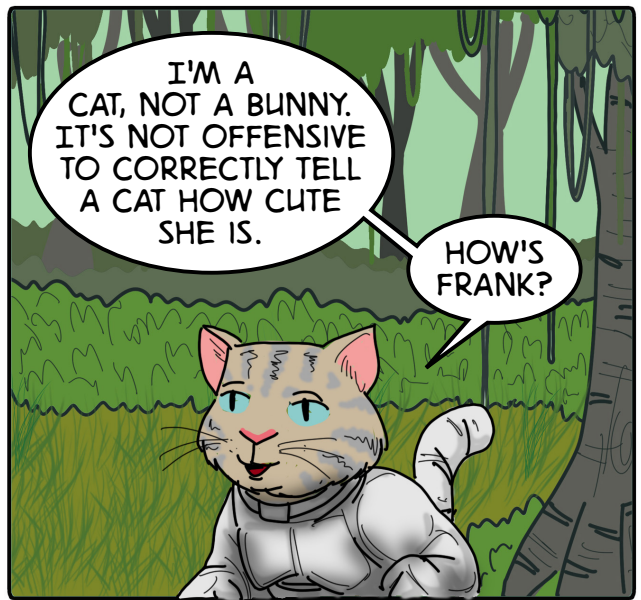
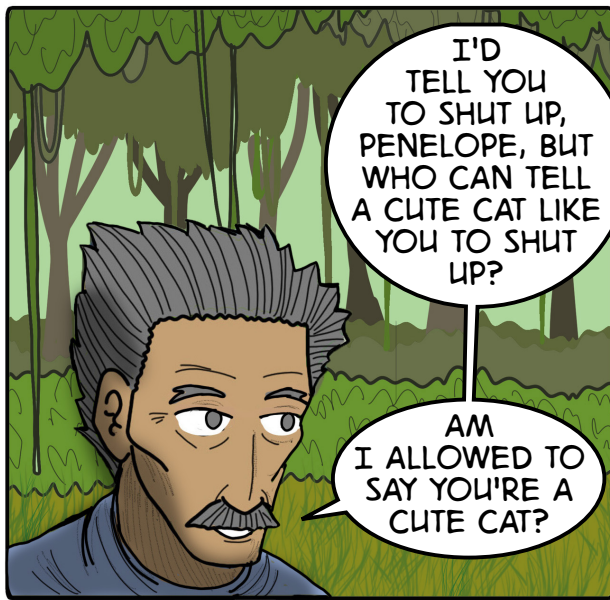


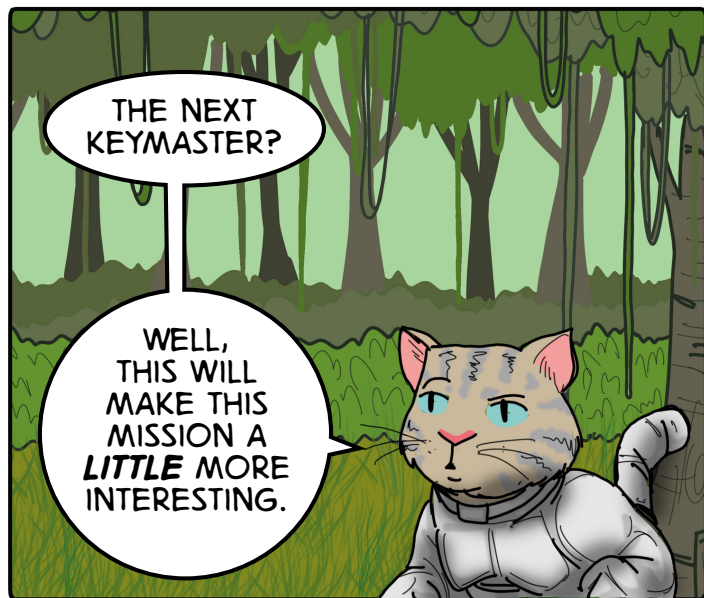
Passageways through the Metaverse. March 2020.

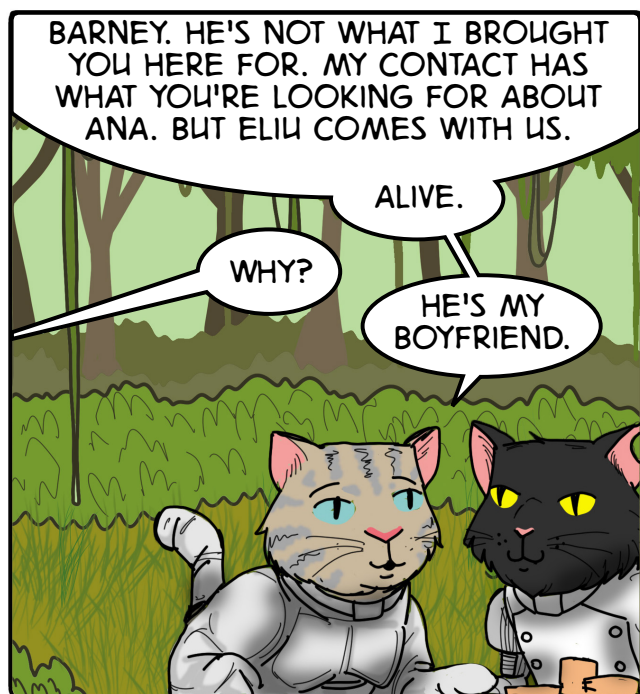
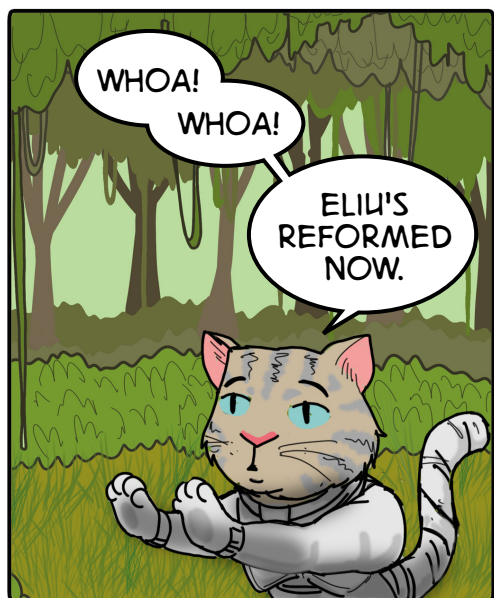
Copyright PPN Creations 2020. All rights reserved. All logos and likenesses of characters herein are trademarks of PPN Creations. No part of this publication may be reproduced or transmitted, in any form or by any means (except for short excerpts for journalistic or review purposes), without the express written permission of PPN Creations. All names, characters, events and locales in this publication are entirely fictional. Any resemblance to actual person (living or dead), events, or places, without satirical intent, is coincidental. PPNCreations.com

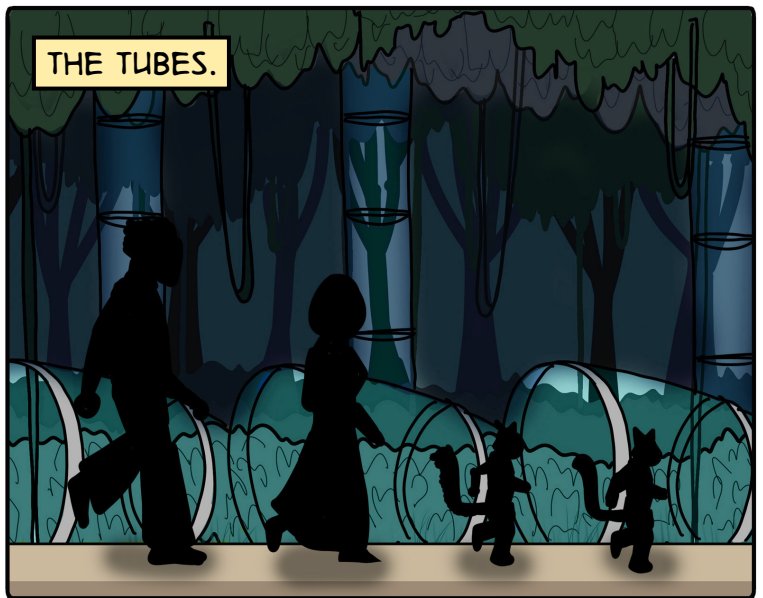




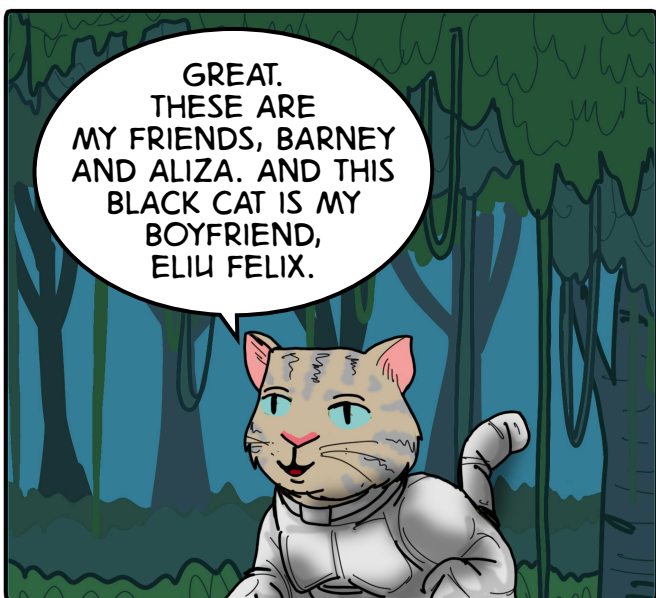


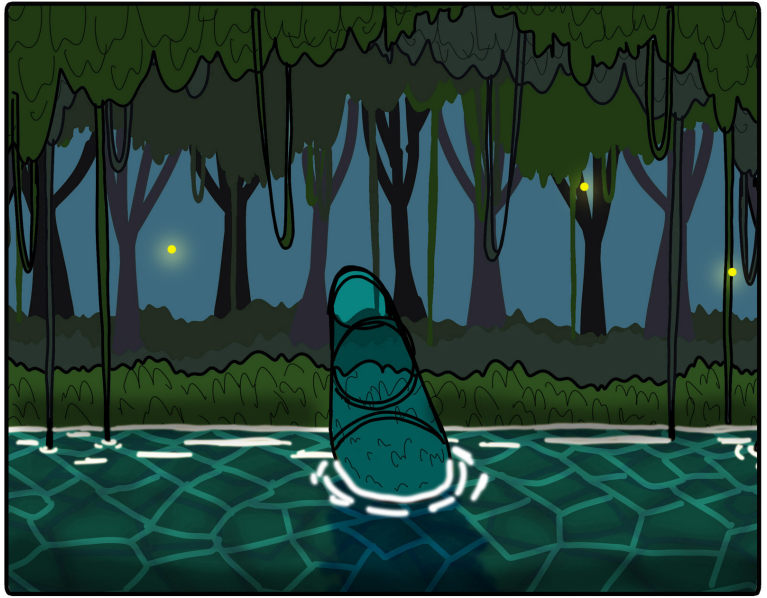
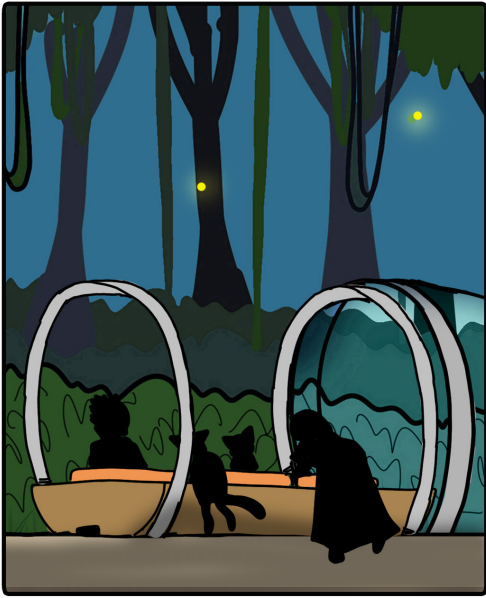


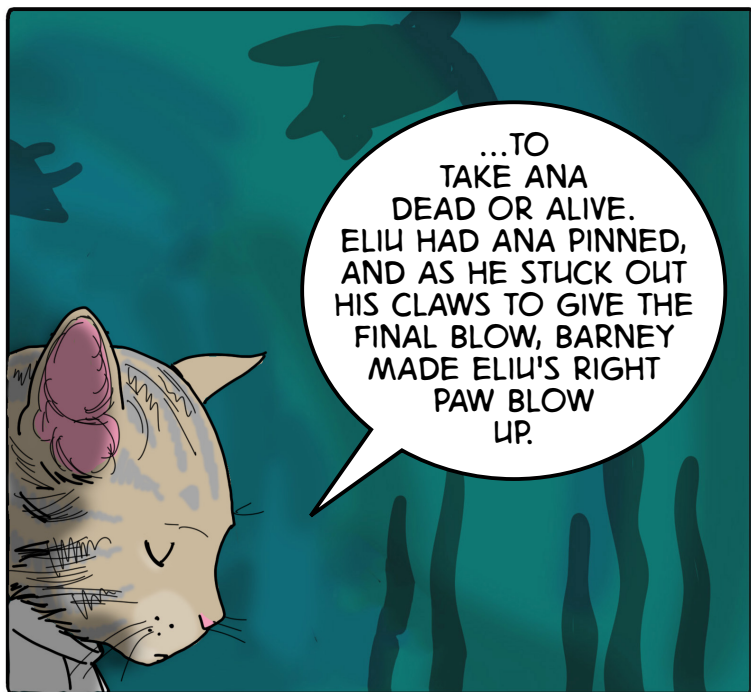
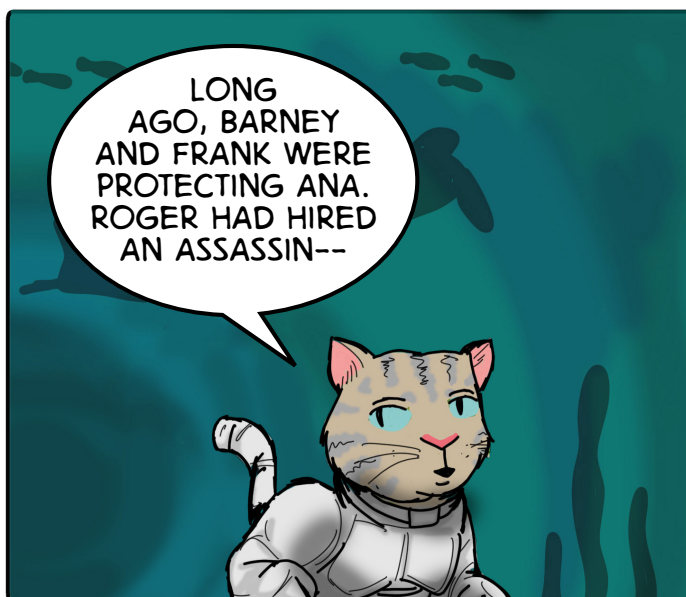
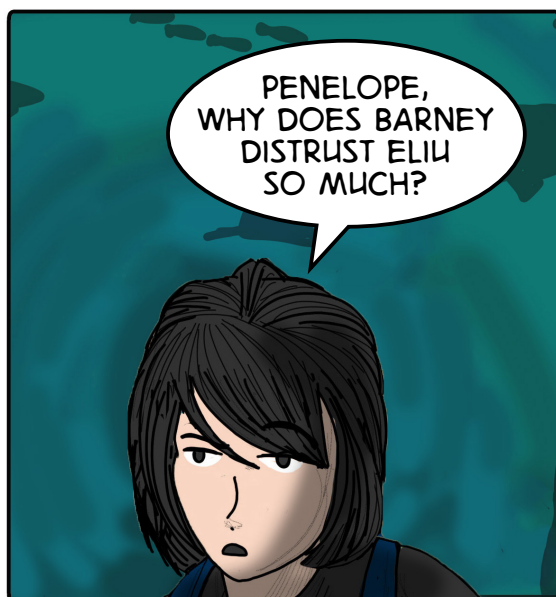


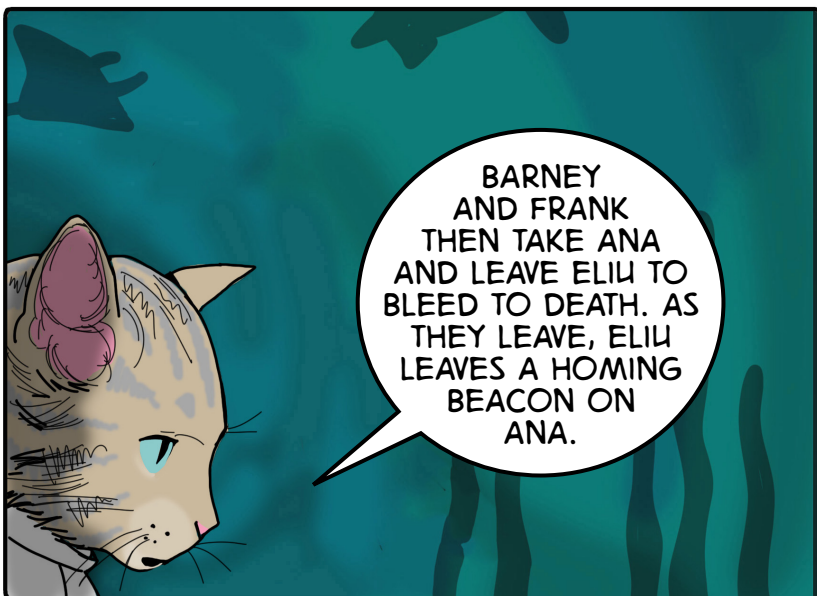
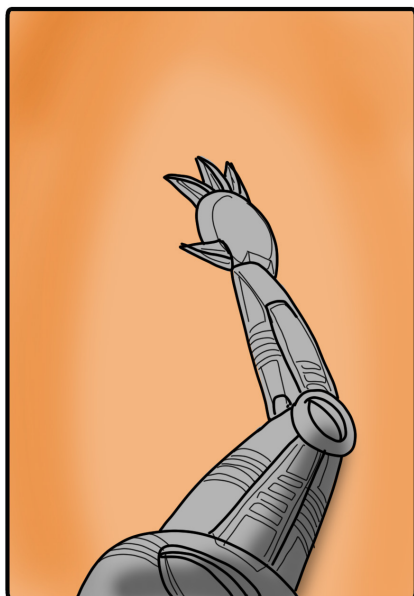




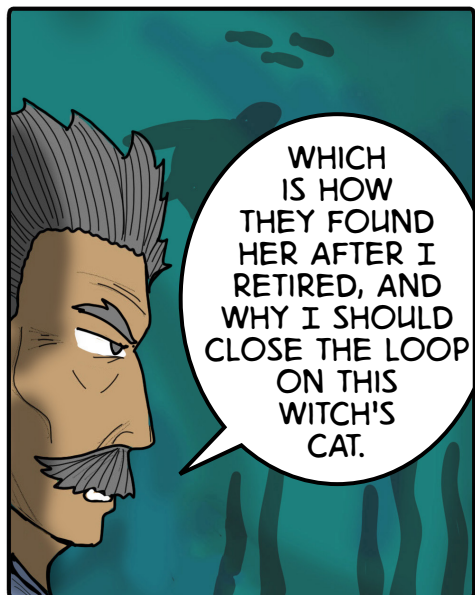




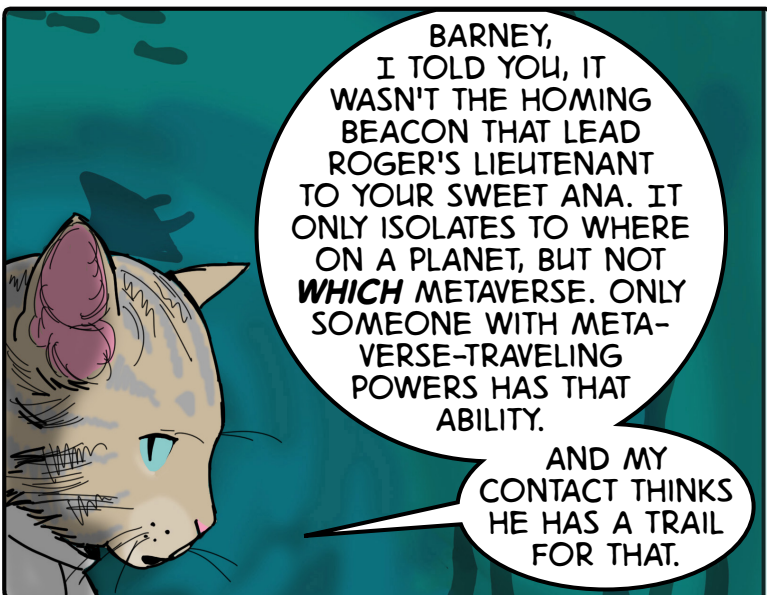




BARNEY
AND FRANK
THEN TAKE ANA
AND LEAVE ELIU
TO BLEED TO DEATH. AS
THEY LEAVE, ELIU
LEAVES A HOMING
BEACON ON
ANA.

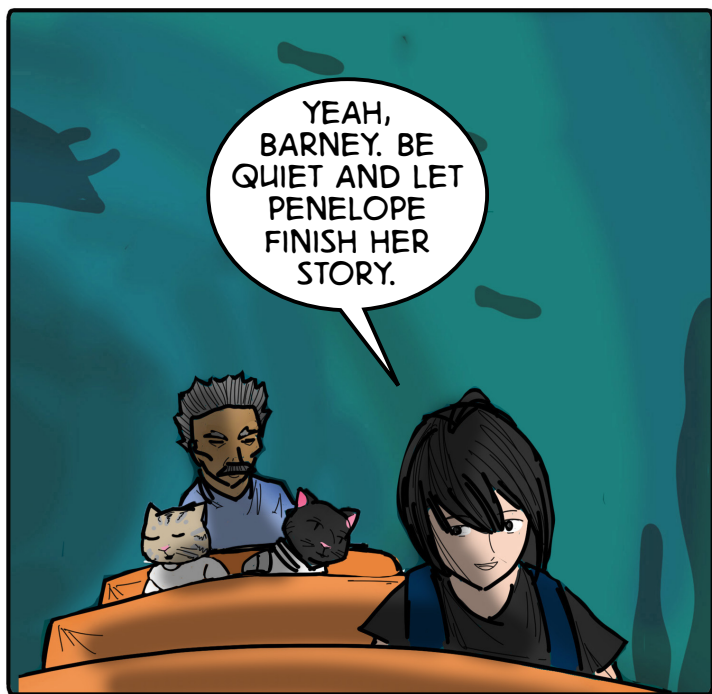


WHICH
IS HOW
THEY FOUND
HER AFTER I
RETIRED, AND
WHY I SHOULD
CLOSE THE LOOP
ON THIS
WITCH'S
CAT.



BARNEY,
I TOLD YOU, IT
WASN'T THE HOMING
BEACON THAT LEAD
ROGER'S LIEUTENANT
TO YOUR SWEET ANA. IT
ONLY ISOLATES TO WHERE
ON A PLANET, BUT NOT
WHICH METAVERSE. ONLY
SOMEONE WITH META-
VERSE-TRAVELING
POWERS HAS THAT
ABILITY.

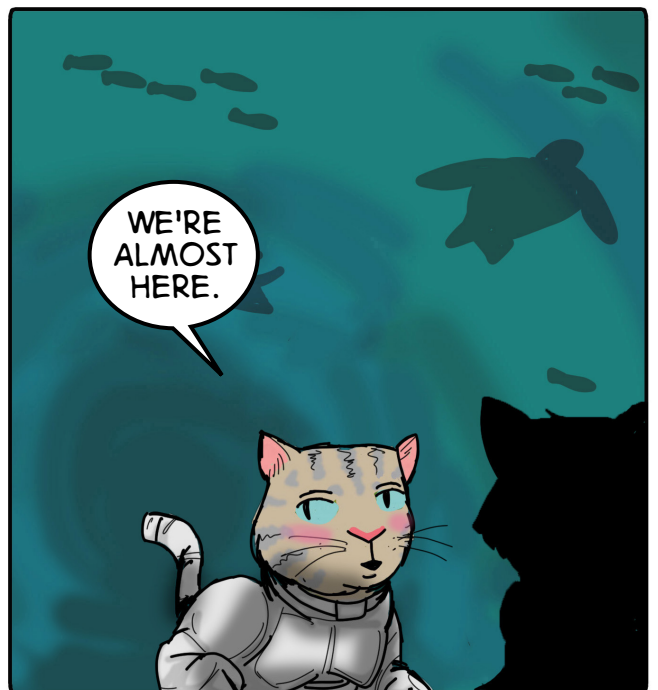
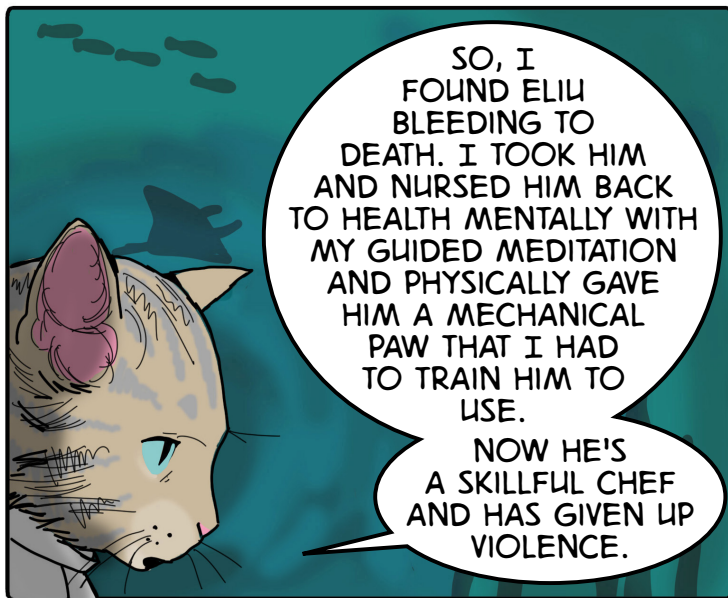
AND MY
CONTACT THINKS
HE HAS A TRAIL
FOR THAT.

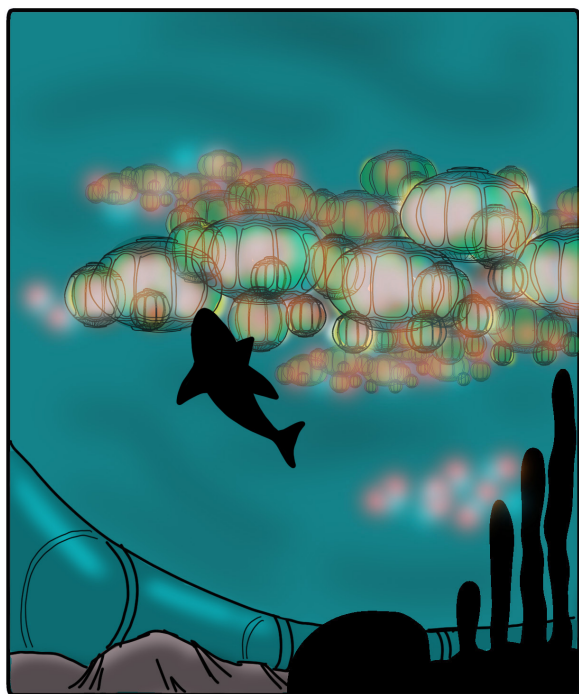
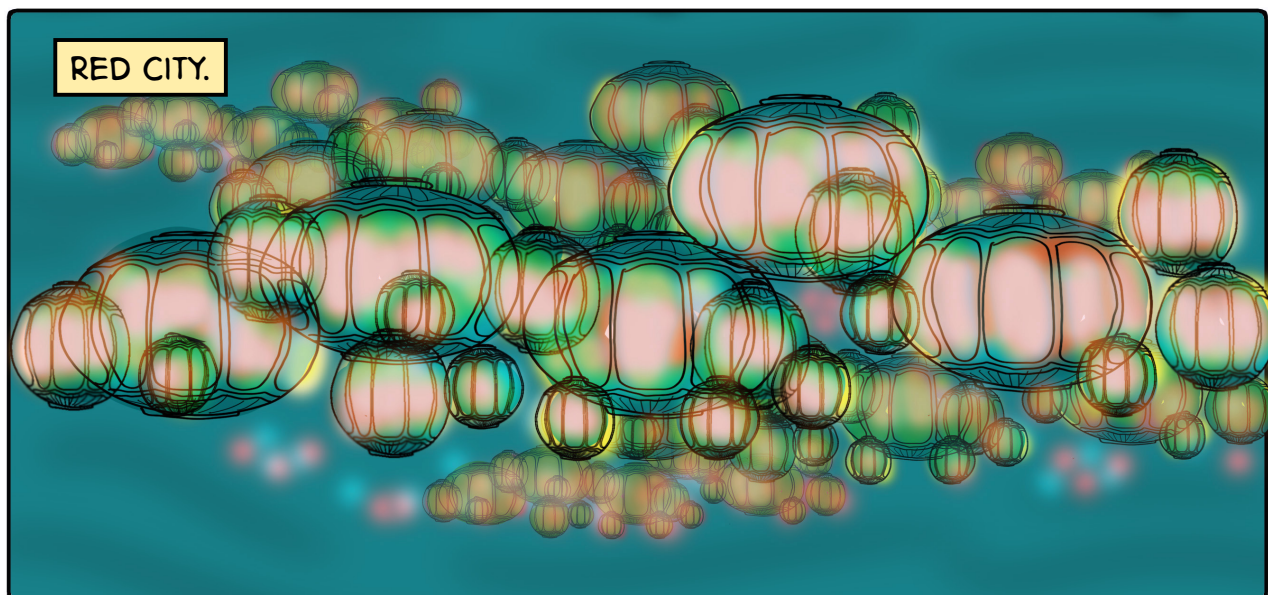


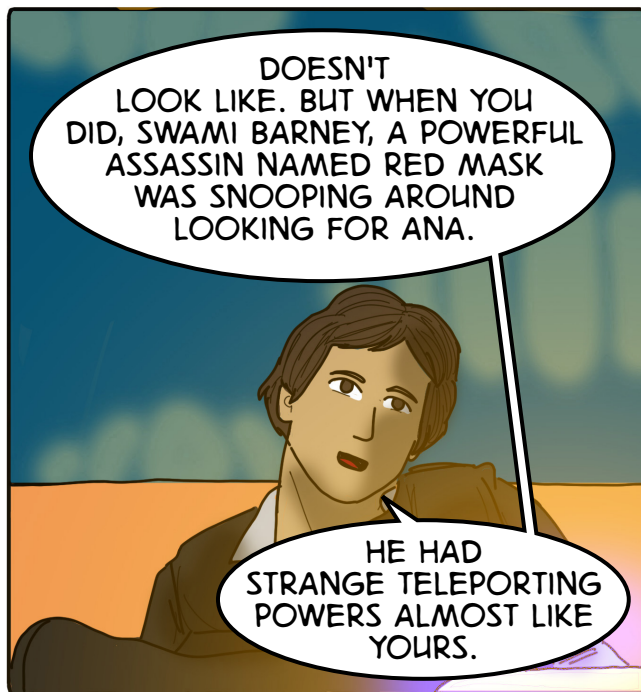
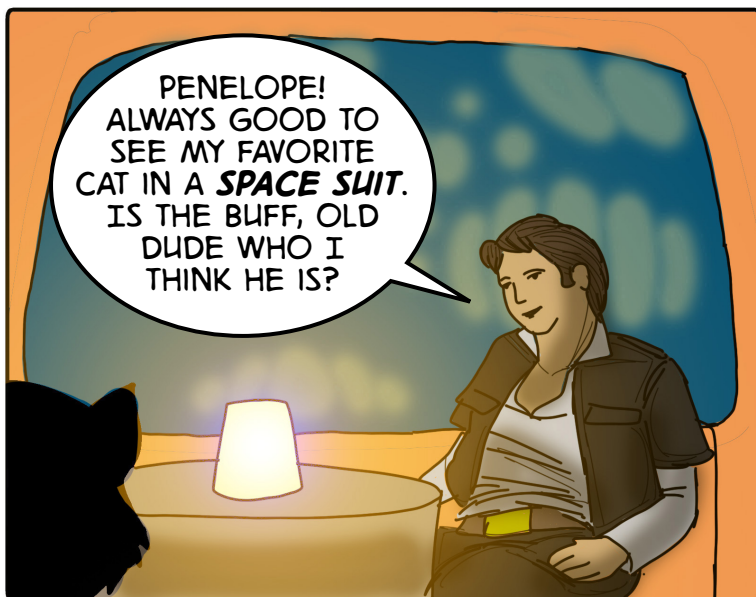
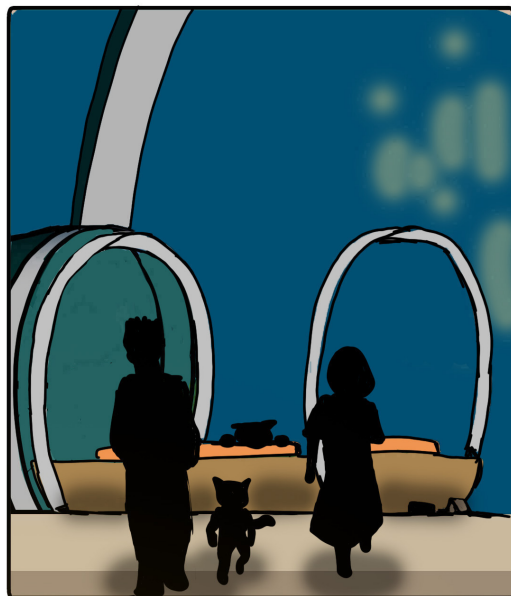
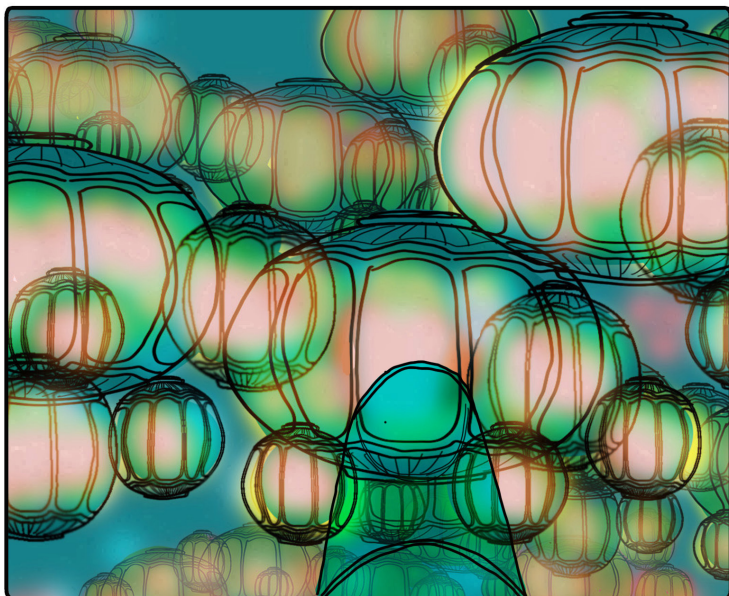
YEAH,
BARNEY. BE
QUIET AND LET
PENELOPE
FINISH HER
STORY.

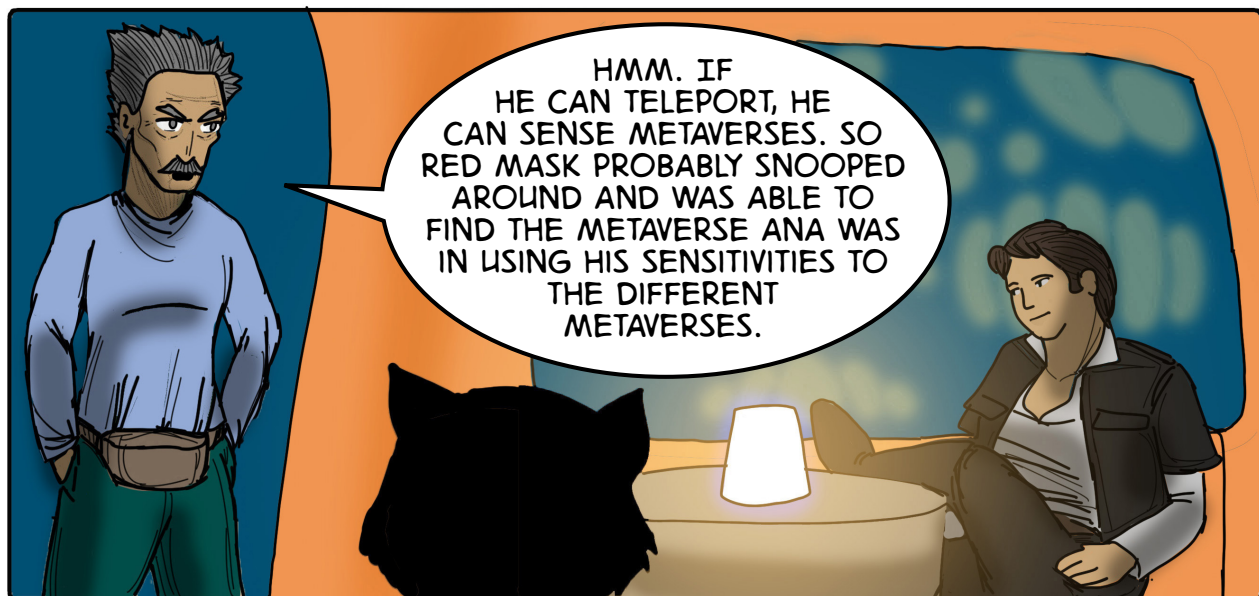


BAH.







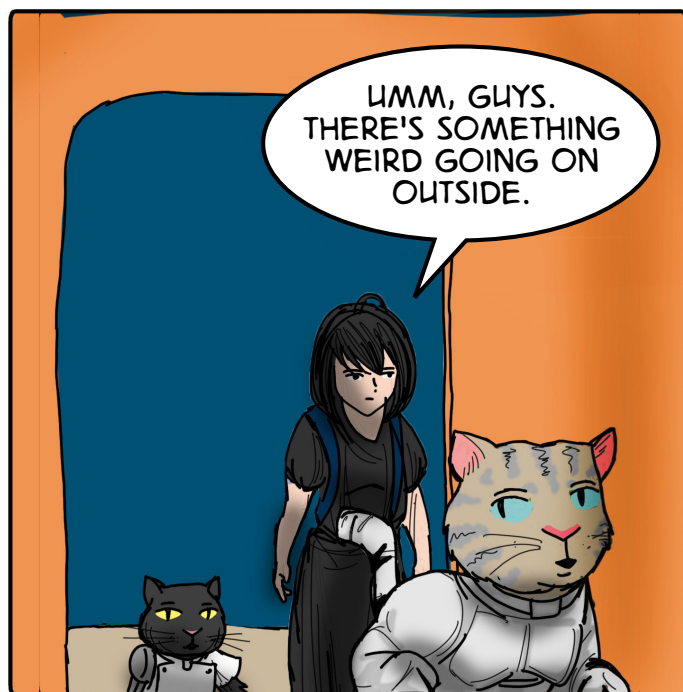


HMM. IF HE CAN TELEPORT, HE CAN SENSE METAVERSES. SO RED MASK PROBABLY SNOOPED AROUND AND WAS ABLE TO FIND THE METAVERSE ANA WAS IN USING HIS SENSITIVITIES TO THE DIFFERENT METAVERSES.



YES.

AND NOW RUMORS ARE THAT RED MASK IS SNOOPING AROUND EVEN MORE LOOKING FOR A GIRL EVEN MORE POWERFUL THAN ANA THE SHAPER.



UHM, GUYS. THERE'S SOMETHING WEIRD GOING ON OUTSIDE.



WHO'S THE KID?

